

**Monoclonal Anti-Flavivirus Group Antigen, Clone D1-4G2-4-15 (produced *in vitro*)**

**Catalog No. NR-50327**

**Product Description:**

Antibody Class: IgG1 $\kappa$ , IgG2 $\alpha$ k

Monoclonal antibody prepared against the group antigen of flaviviruses was purified from clone D1-4G2-4-15 hybridoma supernatant using protein G affinity chromatography. NR-50327 lot 70033596 was produced from NRC-239 lot 5107151 adapted to serum-free media.

**Lot: 70033596**

**Manufacturing Date: 04APR2020**

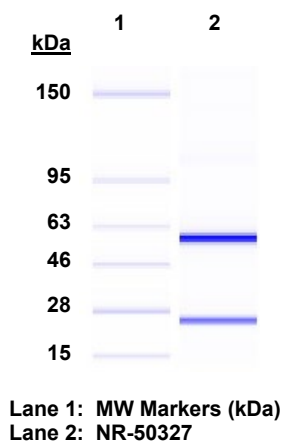
TEST	SPECIFICATIONS	RESULTS
Antibody Class Determination	IgG1 $\kappa$ , IgG2 $\alpha$ k	IgG1 $\kappa$ , IgG2 $\alpha$ k <sup>1</sup>
Agilent® Protein 230 Analysis	Correct molecular weight (MW) for heavy and light chains; Report purity	Correct molecular weight (MW) for heavy and light chains (Figure 1); 99.0% pure
Concentration by Spectrophotometer at OD <sub>280</sub>	~ 1 mg per mL	1.4 mg per mL
Functional Activity by Indirect Fluorescent Antibody Assay Zika virus-infected cells <sup>2</sup> Enterovirus-infected cells <sup>3</sup>	Report results Report results	Fluorescence observed No fluorescence observed
Sterility	0.22 $\mu$ m filter-sterilized	0.22 $\mu$ m filter-sterilized

<sup>1</sup>The clone D1-4G2-4-15 hybridoma was generated using the P3X63Ag8 myeloma fusion partner; P3X63Ag8 secretes the MOPC21 protein, an IgG1 $\kappa$  antibody of unknown specificity. Thus, NR-50327 contains both MOPC21 protein and flavivirus group-specific antibody of the IgG2 $\alpha$ k isotype.

<sup>2</sup>Using Zika virus, R116265 (BEI Resources NR-50551)-infected Vero cells (ATCC® CCL-81™) and 1:100 and 1:300 dilutions of NR-50327

<sup>3</sup>Using Enterovirus D68 (BEI Resources NR-49133)-infected rhabdomyosarcoma cells (ATCC® CCL-136™) and 1:100 and 1:300 dilutions of NR-50327

**Figure 1: Agilent® Protein 230 Analysis**



/Heather Couch/

Heather Couch

15 JAN 2021

Program Manager or designee, ATCC Federal Solutions

ATCC®, on behalf of BEI Resources, hereby represents and warrants that the material provided under this certificate has been subjected to the tests and procedures specified and that the results described, along with any other data provided in this certificate, are true and accurate to the best of ATCC®'s knowledge.

ATCC® is a trademark of the American Type Culture Collection.

You are authorized to use this product for research use only. It is not intended for human use.

