

***Rothia dentocariosa*, Strain M567**

Catalog No. HM-245

Product Description:

Rothia dentocariosa (*R. dentocariosa*), strain M567 was isolated from expectorated sputum from a 32-year-old male patient with cystic fibrosis in January 2008. HM-245 lot 70037968 was produced by the inoculation of the BEI Resources seed lot into Brain Heart Infusion broth and incubated for 2 days at 37°C in an aerobic atmosphere. The material from the initial growth was passaged once on Brain Heart Infusion agar for 1 day at 37°C in an aerobic atmosphere to produce this lot. Quality control testing was completed under propagation conditions unless otherwise noted.

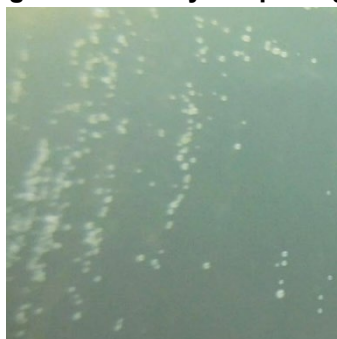
Note: Quality control of HMP material is only performed to demonstrate that the material distributed by BEI Resources is identical to the deposited material. It should not be considered a complete characterization of the deposited organism.

Lot: 70037968

Manufacturing Date: 27AUG2020

TEST	SPECIFICATIONS	RESULTS
Phenotypic Analysis Cellular morphology Colony morphology Motility (wet mount)	Gram-positive rods Report results Report results	Gram-positive, pleomorphic (cocci, rods and filaments) Circular, convex, entire, opaque and cream (Figure 1) Non-motile
Genotypic Analysis Sequencing of 16S ribosomal RNA gene (~ 1430 base pairs)	≥ 99% sequence identity to <i>R. dentocariosa</i> , strain M567 (GenBank: ADDW01000024.1)	100% sequence identity to <i>R. dentocariosa</i> , strain M567 (GenBank: ADDW01000024.1)
Purity (post-freeze) 7 days at 37°C in an aerobic atmosphere with 5% CO ₂ on Tryptic Soy agar with 5% defibrinated sheep blood.	Consistent with expected colony morphology	Consistent with expected colony morphology
Viability (post-freeze)	Growth	Growth

Figure 1: Colony Morphology



/Heather Couch/

Heather Couch

08 FEB 2021

Program Manager or designee, ATCC Federal Solutions

ATCC®, on behalf of BEI Resources, hereby represents and warrants that the material provided under this certificate has been subjected to the tests and procedures specified and that the results described, along with any other data provided in this certificate, are true and accurate to the best of ATCC®'s knowledge.

ATCC® is a trademark of the American Type Culture Collection.

You are authorized to use this product for research use only. It is not intended for human use.

