

H7 Hemagglutinin (HA) Protein from Influenza A Virus, A/Canada/rv444/2004 (H7N3), Recombinant from Baculovirus

Catalog No. NR-43740

This reagent is the tangible property of the U.S. Government.

Product Description:

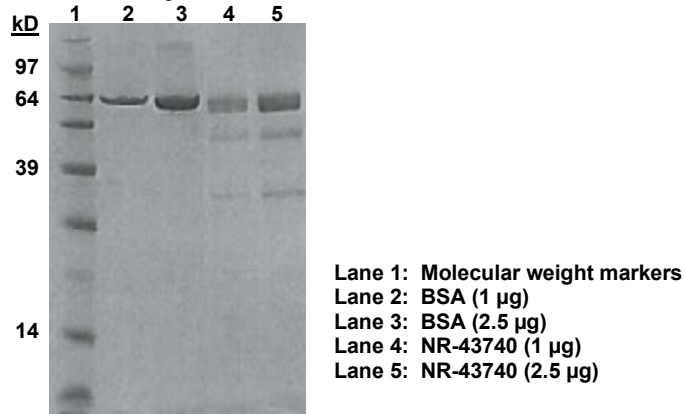
A recombinant form of the H7 hemagglutinin (HA) protein from influenza A virus, A/Canada/rv444/2004 (H7N3) was produced in Sf9 insect cells using a baculovirus expression system. The full-length recombinant H7 HA protein was purified by ion exchange and hydrophobic interaction (Phenyl Sepharose HP column) chromatography. This lot was subjected to quality control testing in December 2020 by St. Jude Children’s Research Hospital (SJCRH), Memphis, Tennessee, USA.

Lot: 70040421

Manufacturing Date: 15DEC2016

TEST	SPECIFICATIONS	RESULTS
Appearance	Report results	Opalescent
SDS-PAGE Analysis	Protein band of interest represents > 90% of total staining intensity	Dominant band of ~ 62 kDa accounting for > 90% of total staining intensity (Figure 1)
Concentration by Bicinchoninic Acid Assay Bovine Serum Albumin (standard)	Report results	0.40 mg per mL
Vial Contents Amount per vial Volume per vial	Report results Report results	87 µg 217 µL
Functional Activity Hemagglutination activity using 0.5% chicken red blood cells Hemagglutination inhibition (HI) assay using polyclonal antiserum to 16 HA subtypes HI titers using polyclonal antiserum to H7 HA subtype A/equine/Prague/1/1956 (H7N7) antiserum A/FPV/Rostock/1934 (H7N1) antiserum A/Netherlands/219/2003 (H7N7) antiserum	Report results Specific to H7 HA subtype Report results Report results Report results	Positive (1:20,480) Specific to H7 HA subtype < 1:40 1:6400 1:6400
Filtration	0.2 µm sterile-filtered	0.2 µm sterile-filtered

Figure 1: SDS-PAGE Analysis of Recombinant H7 HA Protein



/Heather Couch/

Heather Couch

08 MAR 2021

Program Manager or designee, ATCC Federal Solutions

ATCC®, on behalf of BEI Resources, hereby represents and warrants that the material provided under this certificate has been subjected by the manufacturer to the tests and procedures specified and that the results described, along with any other data provided in this certificate, are true and accurate to the best of ATCC®'s knowledge.

ATCC® is a trademark of the American Type Culture Collection.

You are authorized to use this product for research use only. It is not intended for human use.

