

Staphylococcus epidermidis, Strain M0881

Catalog No. NR-41888

Product Description:

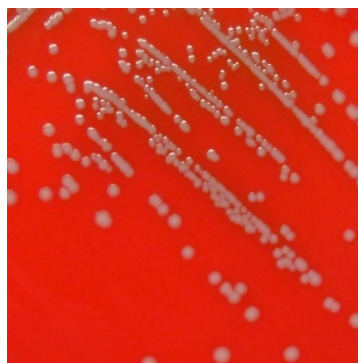
Staphylococcus epidermidis (*S. epidermidis*), strain M0881 was isolated in 2004 from nares of an adult male. NR-41888 lot 70037034 was produced by inoculation of seed material into Tryptic Soy broth and grown for 1 day at 37°C in an aerobic atmosphere. Broth inoculum was added to Tryptic Soy agar with 5% defibrinated sheep blood kolles, which were grown for 1 day at 37°C in an aerobic atmosphere. Quality control testing was completed under propagation conditions unless otherwise noted.

Lot: 70037034

Manufacturing Date: 26JUN2020

TEST	SPECIFICATIONS	RESULTS
Phenotypic Analysis Cellular morphology Colony morphology Motility (wet mount) Hemolysis Biochemical characterization VITEK® MS (MALDI-TOF)	Gram-positive cocci Report results Report results Report results <i>S. epidermidis</i> (≥ 89.9%)	Gram-positive cocci Circular, convex, entire, smooth and gray (Figure 1) Non-motile Non-hemolytic <i>S. epidermidis</i> (99.9%)
Genotypic Analysis Sequencing of 16S ribosomal RNA gene (1490 base pairs)	≥ 99% sequence identity to <i>S. epidermidis</i> , strain M0881 (GenBank: AOAJ01000036.1)	99.9% sequence identity to <i>S. epidermidis</i> , strain M0881 (GenBank: AOAJ01000036.1)
Purity (post-freeze) 7 days at 37°C in an aerobic atmosphere with 5% CO ₂ on Tryptic Soy agar with 5% defibrinated sheep blood	Growth consistent with expected colony morphology	Growth consistent with expected colony morphology
Viability (post-freeze) 1 day at 37°C in an aerobic atmosphere on Tryptic Soy agar with 5% defibrinated sheep blood	Growth	Growth

Figure 1: Colony Morphology



/Heather Couch/

Heather Couch

23 MAR 2021

Program Manager or designee, ATCC Federal Solutions

ATCC®, on behalf of BEI Resources, hereby represents and warrants that the material provided under this certificate has been subjected to the tests and procedures specified and that the results described, along with any other data provided in this certificate, are true and accurate to the best of ATCC®'s knowledge.

ATCC® is a trademark of the American Type Culture Collection.

You are authorized to use this product for research use only. It is not intended for human use.

