

**PstS1 (Gene Rv0934, Non-Acylated), Purified Native Protein from *Mycobacterium tuberculosis*, Strain H37Rv****Catalog No. NR-53528**

This reagent is the tangible property of the U.S. Government.

**Product Description:**

NR-53528 is a preparation of periplasmic phosphate-binding lipoprotein, PstS1 (Gene Rv0934, non-acylated; also referred to as PhoS1), purified from the culture filtrate of *Mycobacterium tuberculosis*, strain H37Rv.

**Lot: 70040694****Manufacturing Date: 28NOV2020**

Production and QC testing were performed by Colorado State University (CSU). The CSU documentation for lot 20.Rv.11.24.B.38kDa is attached.

ATCC®, on behalf of BEI Resources, hereby represents and warrants that the material provided under this certificate has been subjected by the contractor to the tests and procedures specified and that the results described, along with any other data provided in this certificate, are true and accurate to the best of ATCC®'s knowledge.

ATCC® is a trademark of the American Type Culture Collection.

You are authorized to use this product for research use only. It is not intended for human use.



**WORK SHEET FOR PURIFIED NATIVE PROTEINS**

**General Information**

BEI Catalog Number: NR-53528  
Product Description: 38kDa Protein (PhoS1, Rv0934)  
CSU Lot Number: 20.Rv.11.24.B.38kDa  
Species: M. tuberculosis  
Strain: H37Rv

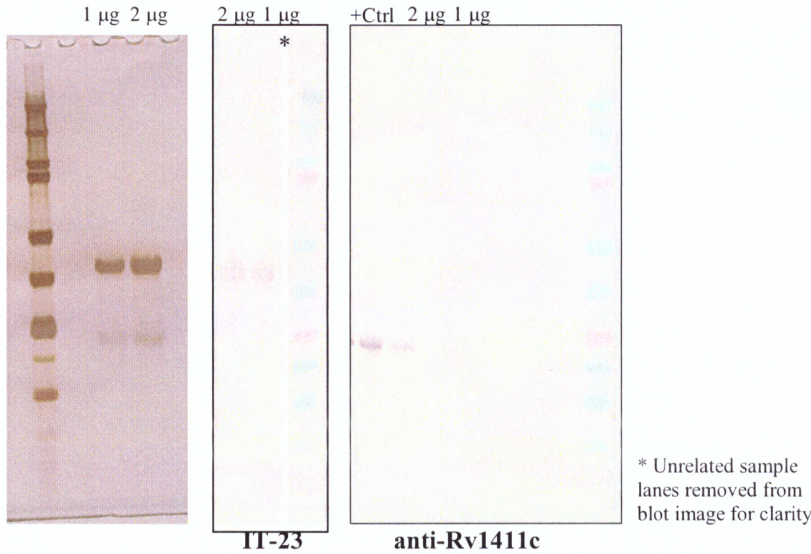
**Purification Information**

Starting material: CFP lots: 17.Rv.2.3.8.8.CFP, 17.Rv.2.7.26.8.CFP, 18.Rv.2.9.5.11.CFP, 18.Rv.2.6.13.11.CFP  
(783.05 mg total)  
Starting material (select one):  
X CFP: Filter Sterilized Yes  
     Cells: Irradiated N/A  
Viability Test Performed: N/A  
Protocol used (SOP #'s): PP024.8  
Date started: 10 / 28 / 2020  
Date completed: 11 / 28 / 2020  
Notebook; page(s): Starting Material: Kala Early, Native Proteins BEI #1, pg 34-45  
Megan Lucas, BEI Production Notebook #5, pg 4-6  
Additional notes (if applicable): N/A

**Quality Control Information**

Clarity of product/suspension after dialysis: clear  
BCA: 0.498  $\mu\text{g}/\mu\text{l}$  Notebook and page(s): MCL, BEI Production #5; pg 6  
Total Protein: 1224  $\mu\text{g}$   
Silver Stain Date: 11 / 23 / 2020 Notebook and page(s): MCL, BEI Production #5; pg 5  
Western blot Date: 11 / 28 / 2020 Antibody used: IT-23 and anti-Rv1411c mouse monoclonal  
Positive controls: 5  $\mu\text{g}$  whole cell lysate & 5  $\mu\text{g}$  CFP  
Notebook and page(s): MCL, BEI Production #5; pg 7  
Mass Spectrometry information/file (if applicable): N/A

**QC Gel and Blot:**



**Aliquot Information:**

12 x 100  $\mu\text{g}$   
1 x 24  $\mu\text{g}$

[Signature]  
(Research Associate)

3-23-21  
(date)

[Signature]  
(Laboratory Supervisor)

3-24-21  
(date)