

***Mycobacterium tuberculosis*, Strain CDC1551, Whole Cell Lysate****Catalog No. NR-14823**

This reagent is the tangible property of the U.S. Government.

**Product Description:**

*Mycobacterium tuberculosis*, strain CDC1551 whole cell lysate contains proteins, lipids and carbohydrates present within the bacterial cell.

**Lot: 70037223****Manufacturing Date: 29JAN2021**

Production and QC testing were performed by Colorado State University (CSU). The CSU documentation for lot 18.CSU93.2.21.11.WCL is attached.

ATCC®, on behalf of BEI Resources, hereby represents and warrants that the material provided under this certificate has been subjected by the contractor to the tests and procedures specified and that the results described, along with any other data provided in this certificate, are true and accurate to the best of ATCC®'s knowledge.

ATCC® is a trademark of the American Type Culture Collection.

You are authorized to use this product for research use only. It is not intended for human use.



## WORK SHEET FOR WHOLE CELL LYSATE

### General Information

BEI Catalog Number: NR-14823  
CSU Lot Number: 18.CSU93.2.21.11.WCL  
Species: *Mycobacterium tuberculosis*  
Strain: CDC 1551

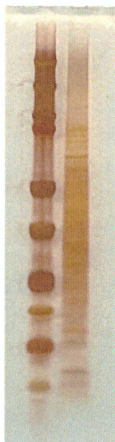
### Sonication and Fractionation Information

Starting material (lot #): 18.CSU93.2.21.11.WCg.a  
Cells Irradiated: Yes  
Viability Test Performed: No Viable Organism Detected  
Cell amount (wet weight): 52.5g  
SOP #: PP007.4 Notebook pages: JMR BEI#1 p52  
Date of French Press Sonication: 01/28/2021; Buffer used: PBS-EDTA with protease inhibitor  
Centrifugation Notes 3,000rpm for 15 minutes  
Date 10 mM ammonium bicarbonate dialysis started: 01/28/2021  
date completed: 01/29/2021  
Note: 800 mg was used to generate cell wall.  
Notebook; page(s): JMR BEI#1 p53

### Quality Control Information

BCA: 10.037  $\mu\text{g}/\mu\text{l}$ . Notebook and page(s): JMR BEI#1 p53  
Total Protein: 600mg  
Silver Stain Date: 02/01/2021. Notebook and page(s): JMR BEI#1 p55

### QC Gel: Ladder, 4ug CDC 1551 WCL



### Aliquot Information: 60 x 10 mg vials to BEI

Jean M. Rayen 2/5/21  
(Research Associate) (date)

C. McHaffey 2/9/21  
(Laboratory Supervisor) (date)