

Human Neuropilin-1 (NRP1) with C-Terminal Avi and Histidine Tags, Recombinant from HEK293 Cells

Catalog No. NR-55345

BPS Bioscience Catalog No. 100911

Product Description:

A recombinant form of the human neuropilin-1 (NRP1) protein (GenPept: [NP_001019799](#)) was produced by transient transfection in human embryonic kidney HEK293 cells, purified using affinity chromatography (Ni-NTA agarose) and biotinylated using AviTag™ technology.¹ NR-55345 was expressed with the CD33 signal sequence, which was cleaved during secretion to yield 623 residues of the human NRP1 protein (amino acid residues F22 to K644) and features a C-terminal AviTag™ BirA biotinylation acceptor sequence fused to a hexa-histidine tag.

Lot: 201029-2

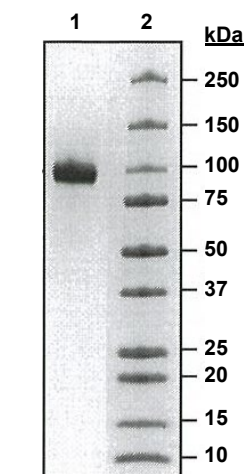
Manufacturing Date: 29OCT2020

TEST	SPECIFICATIONS	RESULTS
Appearance	Clear and colorless	Clear and colorless
SDS-PAGE Analysis	Report results	Protein band of ~ 75 kDa represents ≥ 90% of total staining intensity (Figure 1) ²
Biotinylation	Report results	≥ 90%
Purity Gel filtration	< 10% aggregation	< 10% aggregation (Figure 2) ²
Concentration by Bradford Assay (pre-vial) Bovine Serum Albumin (standard)	Report results	1.40 mg per mL
Final Product Amount per vial Volume per vial	Report results Report results	53.2 µg 38.0 µL

¹NR-55345 was not filter-sterilized after purification and may not have a sufficiently low bioburden to be stored at warmer temperatures than -80°C.

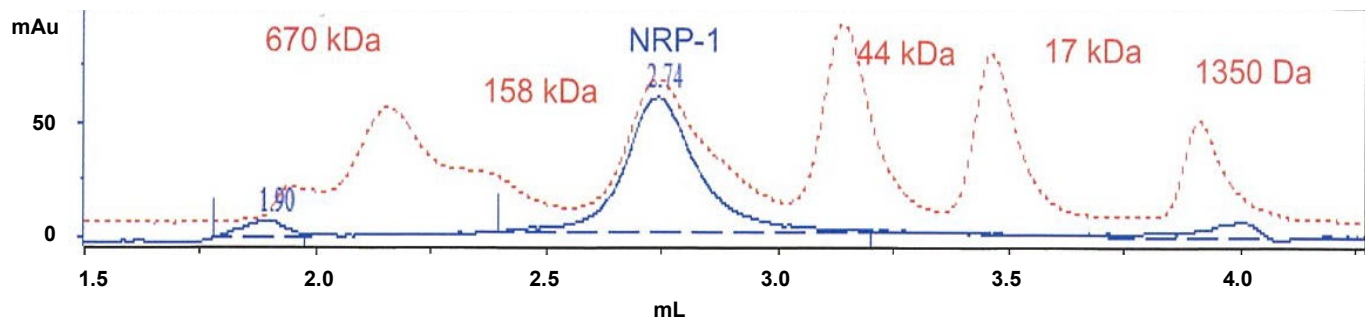
²The recombinant protein migrated to a higher molecular weight than was expected, likely caused by glycosylation. For more information, please see Windwarder, M., et al. "Detailed Characterization of the O-Linked Glycosylation of the Neuropilin-1 c/MAM-Domain." *Glycoconj. J.* 33 (2016): 387-397. PubMed: 26059692.

Figure 1: SDS-PAGE Analysis



Lane 1: NR-55345 (4 µg)
Lane 2: MW ladder

Figure 2: Gel Filtration



/Heather Couch/
Heather Couch

21 JUN 2021

Program Manager or designee, ATCC Federal Solutions

ATCC®, on behalf of BEI Resources, hereby represents and warrants that the material provided under this certificate has been subjected by the contributor to the tests and procedures specified and that the results described, along with any other data provided in this certificate, are true and accurate to the best of ATCC®'s knowledge.

ATCC® is a trademark of the American Type Culture Collection.

You are authorized to use this product for research use only. It is not intended for human use.

