

Genomic RNA from Influenza B Virus, B/Ohio/01/2005 (Victoria Lineage)

Catalog No. NR-43753

Product Description:

Genomic RNA was isolated from a preparation of pooled allantoic fluid from specific pathogen free (SPF) embryonated chicken eggs (9- to 11-day-old; Charles River, Norwich, Connecticut, USA) infected with influenza B virus, B/Ohio/01/2005 (Victoria Lineage) (BEI Resources NR-41801 lot 70040735) using QIAamp® Viral RNA Mini Kit (Qiagen® 52904). The viral genomic RNA is in a background of cellular nucleic acid and carrier RNA.

Lot: 70041162

Manufacturing Date: 07JAN2021

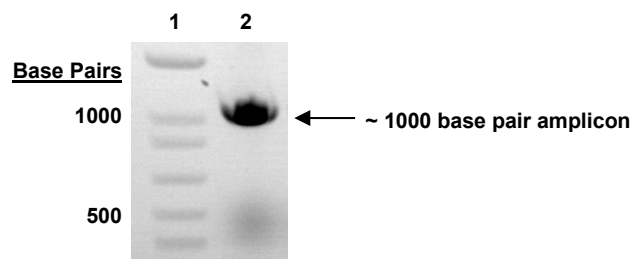
TEST	SPECIFICATIONS	RESULTS
Genotypic Analysis Sequencing of species-specific region (~ 880 nucleotides)	≥ 98% identity with B/Ohio/01/2005 (Victoria Lineage) (GenBank: EF473448.1)	99.9% identity with B/Ohio/01/2005 (Victoria Lineage) (GenBank: EF473448.1)
Functional Activity by RT-PCR Amplification¹ Hemagglutinin gene	~ 1000 base pair amplicon	~ 1000 base pair amplicon (Figure 1)
Estimated Concentration (post-dilution) by RiboGreen® Measurement (Viral, Cellular and Carrier)²	Report results	0.4 ng per 100 µL (0.004 µg per mL)
Estimated Amount per Vial²	Report results	0.4 ng
Virus Inactivation 10% of total yield inoculated incubated in SPF embryonated chicken eggs and evaluated by hemagglutination assay ³	No viable virus detected	No viable virus detected

¹Amplified using iTaq™ Universal SYBR Green One-step Kit (Bio-Rad® 172-5151) with 5 µL of NR-43753 in a 50 µL reaction

²Measurement is determined pre-vial prior to dilution due to the limit of detection of the quantification method

³Use of the QIAamp® Viral RNA Mini Kit has been demonstrated to consistently inactivate 100% of influenza viruses.

Figure 1: Functional Activity of NR-43753 by RT-PCR Amplification of Hemagglutinin Gene



Lane 1: Invitrogen™ TrackIt™ 1 Kb Plus DNA Ladder
Lane 2: PCR product from 1 µL of NR-43753

/Heather Couch/
Heather Couch

24 JUN 2021

Program Manager or designee, ATCC Federal Solutions

ATCC®, on behalf of BEI Resources, hereby represents and warrants that the material provided under this certificate has been subjected to the tests and procedures specified and that the results described, along with any other data provided in this certificate, are true and accurate to the best of ATCC®'s knowledge.

ATCC® is a trademark of the American Type Culture Collection.

You are authorized to use this product for research use only. It is not intended for human use.

