

**Monoclonal Anti-*Mycobacterium tuberculosis* LAM, Clone CS-40 (produced *in vitro*)**

**Catalog No. NR-13812**

This reagent is the tangible property of the U.S. Government.

**Product Description:**

Antibody Class: IgG<sub>1κ</sub>

Antibody Designation: CS-40

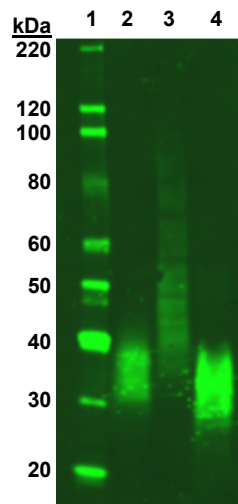
Monoclonal antibody to *Mycobacterium tuberculosis*, strain H37Rv lipoarabinomannan (LAM), clone CS-40 was produced in cell culture using a B cell hybridoma generated by the fusion of myeloma cells with immunized mouse splenocytes.

**Lot: 70039902**

**Manufacturing Date: 13NOV2020**

TEST	SPECIFICATIONS	RESULTS
Antibody Class Determination	Report results	IgG <sub>1κ</sub>
Functional Activity by Western Blot Culture filtrate protein (CFP) fraction (BEI Resources NR-14825) Cytosol (CYT) fraction (BEI Resources NR-14835) Lipoarabinomannan (LAM) fraction (BEI Resources NR-14849)	Report results Report results Report results	Reactive (Figure 1) Reactive (Figure 1) Reactive (Figure 1)
Sterility	0.22 μm filter-sterilized	0.22 μm filter-sterilized

**Figure 1: Functional Activity by Western Blot**



Lane 1: MagicMark™ XP Protein Standard

Lane 2: Culture filtrate protein fraction (BEI Resources NR-14825)

Lane 3: Cytosol fraction (BEI Resources NR-14835)

Lane 4: LAM fraction (BEI Resources NR-14849)

/Heather Couch/

Heather Couch

16 AUG 2021

Program Manager or designee, ATCC Federal Solutions

ATCC®, on behalf of BEI Resources, hereby represents and warrants that the material provided under this certificate has been subjected to the tests and procedures specified and that the results described, along with any other data provided in this certificate, are true and accurate to the best of ATCC®'s knowledge.

ATCC® is a trademark of the American Type Culture Collection.

You are authorized to use this product for research use only. It is not intended for human use.

