

***Pseudomonas* sp., Strain 2\_1\_26**

**Catalog No. HM-214**

**Product Description:**

*Pseudomonas* sp., strain 2\_1\_26 was isolated from healthy biopsy tissue taken from the rectum of a 59-year-old male. HM-214 lot 70043161 was produced by the inoculation of BEI Resources seed lot 59976233 into Tryptic Soy broth and incubated for 1 day at 37°C in an aerobic atmosphere. Broth inoculum was added to Tryptic Soy agar kolles, which were grown for 1 day at 37°C in an aerobic atmosphere to produce this lot. Quality control testing was completed under propagation conditions unless otherwise noted.

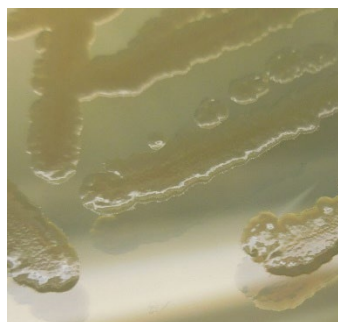
Note: Quality control of HMP material is only performed to demonstrate that the material distributed by BEI Resources is identical to the deposited material. It should not be considered a complete characterization of the deposited organism.

**Lot: 70043161**

**Manufacturing Date: 15APR2021**

TEST	SPECIFICATIONS	RESULTS
<b>Phenotypic Analysis</b> Cellular morphology Colony morphology  Hemolysis 1 day at 37°C in an aerobic atmosphere on Tryptic Soy agar with 5% defibrinated sheep blood  Motility (wet mount)	Gram-negative rods Report results  Report results  Report results	Gram-negative rods Irregular, flat, undulate, smooth and green (Figure 1) β-hemolytic  Motile
<b>Genotypic Analysis</b> Sequencing of 16S ribosomal RNA gene (~ 1480 base pairs)	≥ 99% sequence identity to <i>Pseudomonas</i> sp., strain 2_1_26 (GenBank: ACWU01000257.1)	100% sequence identity to <i>Pseudomonas</i> sp., strain 2_1_26 (GenBank: ACWU01000257.1)
<b>Purity (post-freeze)</b> Anaerobic 7 days at 37°C on Tryptic Soy agar Aerobic with 5% CO <sub>2</sub> 7 days at 37°C on Tryptic Soy agar	Growth consistent with expected colony morphology Growth consistent with expected colony morphology	Growth consistent with expected colony morphology Growth consistent with expected colony morphology
<b>Viability (post-freeze)</b>	Growth	Growth

**Figure 1: Colony Morphology**



/Heather Couch/

Heather Couch

12 OCT 2021

Program Manager or designee, ATCC Federal Solutions

ATCC®, on behalf of BEI Resources, hereby represents and warrants that the material provided under this certificate has been subjected to the tests and procedures specified and that the results described, along with any other data provided in this certificate, are true and accurate to the best of ATCC®'s knowledge.

ATCC® is a trademark of the American Type Culture Collection.

You are authorized to use this product for research use only. It is not intended for human use.

