

***Corynebacterium amycolatum*, Strain SK46**

Catalog No. HM-109

Product Description:

Corynebacterium amycolatum (*C. amycolatum*), strain SK46 was isolated from the right arm normal skin of a 57-year-old man. *C. amycolatum*, strain SK46 was deposited by Guillermo I. Perez-Perez, D.Sc., Associate Professor of Medicine, Departments of Medicine and Microbiology, School of Medicine, New York University, New York, New York, USA. HM-109 was produced by the inoculation of BEI Resources seed lot 60051919 into Brain Heart Infusion broth and incubated for 1 day at 37°C in an aerobic atmosphere. The material from the initial growth was passaged once in Tryptic Soy agar with 5% defibrinated sheep blood kolles for 1 day at 37°C in an aerobic atmosphere to produce this lot. Quality control testing was completed under propagation conditions unless otherwise noted.

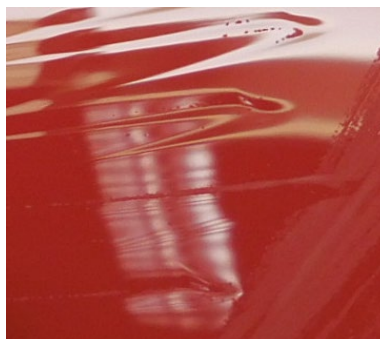
Note: Quality control of HMP material is only performed to demonstrate that the material distributed by BEI Resources is identical to the deposited material. It should not be considered a complete characterization of the deposited organism.

Lot: 70043164

Manufacturing Date: 07APR2021

TEST	SPECIFICATIONS	RESULTS
Phenotypic Analysis Cellular morphology Colony morphology Motility (wet mount)	Gram-positive rods Report results Non-motile	Gram-positive rods Circular, low convex, entire, smooth and gray (Figure 1) Non-motile
Genotypic Analysis Sequencing of 16S ribosomal RNA gene (~ 1460 base pairs)	≥ 99% sequence identity to <i>C. amycolatum</i> , strain SK46 (GenBank: ABZU01000033.1)	100% sequence identity to <i>C. amycolatum</i> , strain SK46 (GenBank: ABZU01000033.1)
Purity (post-freeze) Purity of this lot was assessed for 7 days at 37°C in an aerobic atmosphere with and without 5% CO ₂ on Tryptic Soy agar with 5% defibrinated sheep blood	Growth consistent with expected colony morphology	Growth consistent with expected colony morphology
Viability (post-freeze)	Growth	Growth

Figure 1: Colony Morphology



/Heather Couch/

Heather Couch

15 OCT 2021

Program Manager or designee, ATCC Federal Solutions

ATCC®, on behalf of BEI Resources, hereby represents and warrants that the material provided under this certificate has been subjected to the tests and procedures specified and that the results described, along with any other data provided in this certificate, are true and accurate to the best of ATCC®'s knowledge.

ATCC® is a trademark of the American Type Culture Collection.

You are authorized to use this product for research use only. It is not intended for human use.

