

Certificate of Analysis for MRA-897A

Monoclonal Anti-*Plasmodium* Apical Membrane Antigen 1, Clone 28G2 (produced *in vitro*)

Catalog No. MRA-897A

Product Description:

Antibody Class: IgG2a

Rat monoclonal antibody reactive with the Apical Membrane Antigen 1 (AMA-1) from *Plasmodium* species was purified from clone 28G2 hybridoma supernatant by protein G affinity chromatography. MRA-897A was produced from BEI Resources seed lot 63288158 adapted to serum-free media.

Lot: 63283090

Manufacturing Date: 24FEB2015

TEST	SPECIFICATIONS	RESULTS
Antibody Class Determination	IgG2a	IgG2ak
Experion™ Pro260 Analysis	Correct molecular weight (MW) for heavy and light chains; Report purity	Correct molecular weight (MW) for heavy and light chains (Figure 1); 97.4% pure
Concentration by Spectrophotometer at OD ₂₈₀	~ 1 mg per mL	1.1 mg per mL
Functional Activity by Western Blot ^{1,2} <i>Plasmodium falciparum</i> 3D7 culture supernatant ³	Reactive	Reactive (Figure 2)
Sterility	0.22 µm filter-sterilized	0.22 µm filter-sterilized

¹Using a 1:500 dilution of MRA-897A as primary antibody and a 1:10000 dilution of goat anti-rat IRDye® 800CW conjugate (LiCor® 925-32219) as secondary antibody

²MRA-897A was not reactive with a 1:500 or 1:1000 dilution of AMA-1 recombinant protein or protein extracted from MRA-102.

³Gel was loaded with supernatant from 2.5×10^8 cultured parasites (BEI Resources MRA-102) in a volume of 40 µL.

Figure 1: Experion™ Pro260 Analysis

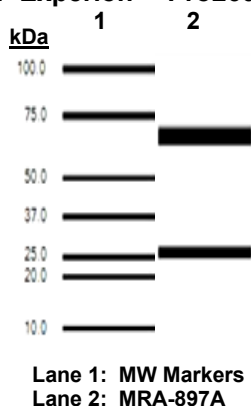
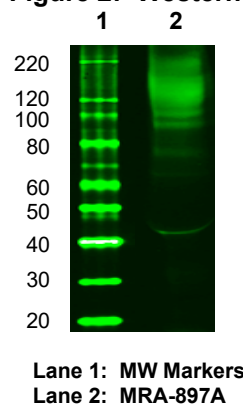


Figure 2: Western Blot



/Heather Couch/

Heather Couch

10 NOV 2021

Program Manager or designee, ATCC Federal Solutions

ATCC®, on behalf of BEI Resources, hereby represents and warrants that the material provided under this certificate has been subjected to the tests and procedures specified and that the results described, along with any other data provided in this certificate, are true and accurate to the best of ATCC®'s knowledge.

ATCC® is a trademark of the American Type Culture Collection.

You are authorized to use this product for research use only. It is not intended for human use.



BEI Resources

www.beiresources.org

E-mail: contact@beiresources.org

Tel: 800-359-7370

Fax: 703-365-2898