

GroES (Gene Rv3418c), Purified Native Protein from *Mycobacterium tuberculosis*, Strain H37Rv**Catalog No. NR-14861**

This reagent is the tangible property of the U.S. Government.

Product Description:

NR-14861 is a preparation of the GroES (Gene Rv3418c) purified native proteins from the culture filtrate of *Mycobacterium tuberculosis*, strain H37Rv. A supernatant from a 40% saturated ammonium sulfate precipitation of culture filtrate proteins were precipitated with 70% saturated ammonium sulfate. The pellet was suspended and dialyzed. The material that did not bind to the concanavalin A column was resolved by reversed phase HPLC and the fractions containing GroES homologue were pooled and lyophilized.

Lot: 70040693**Manufacturing Date: 19MAR2021**

Production and QC testing were performed by Colorado State University (CSU). The CSU production documentation for lot 21.Rv.3.19.B.GroES is attached.

ATCC®, on behalf of BEI Resources, hereby represents and warrants that the material provided under this certificate has been subjected by the contractor to the tests and procedures specified and that the results described, along with any other data provided in this certificate, are true and accurate to the best of ATCC®'s knowledge.

ATCC® is a trademark of the American Type Culture Collection.

You are authorized to use this product for research use only. It is not intended for human use.



WORK SHEET FOR PURIFIED NATIVE PROTEINS

General Information

BEI Catalog Number: NR-14861
Product Description: GroES Protein (Rv3418c)
CSU Lot Number: 21.Rv.3.19.B.GroES
Species: *Mycobacterium tuberculosis*
Strain: H37Rv

Purification Information

Starting material: 17.Rv.2.11.1.11.CFP, 17.Rv.2.2.1.10.CFP, 17.Rv.2.1.18.9.CFP, 18.Rv.2.8.22.10.CFP, 18.Rv.2.1.17.8.CFP

Starting material (select one):

CFP: Filter Sterilized Yes

Cells: Irradiated N/A

Viability Test Performed: N/A

Protocol used (SOP #'s): PPO35.5

Date started: 8/31/20

Date completed: 3/19/21

Notebook; page(s): Native Proteins BEI KE #1 pgs. 1-21, 25, 27, 38-39, 41, 43-44, 46, 48, 56, 58-63, 68-71, 73-74, 77, 81-87, 90, 92

Additional notes (if applicable): N/A

Quality Control Information

Clarity of product/suspension after dialysis: clear, some aggregates seen whilst aliquoting

BCA: 1.005 µg/µl

Notebook and page(s): Native Proteins BEI KE #1 pgs. 83

Total Protein: 2.55025mg

Simply blue stain Date: 3/17/21

Notebook and page(s): Native Proteins BEI KE #1 pgs. 86, 90

Western blot Date: 3/17/21

Antibody used: SA-12 (1:20) and anti-Mpt64 (1:5000) mouse monoclonal

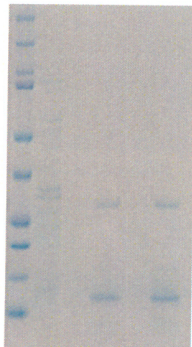
Notebook and page(s): Native Proteins BEI KE #1 pgs. 86, 90

Mass Spectrometry information/file (if applicable): N/A

QC Gel and Blots:

Anti-GroES (SA-12)

Anti-Mpt64



L	2 µL protein ladder
1	4 µg CFP (+ control)
2	1 µg GroES protein
3	2 µg GroES protein

Aliquot Information:

5 x 500 µg

1 x 50.25 µg

Kala Eddy 3/29/21
(Research Associate) (date)

C. Mahaffy 4/1/21
(Laboratory Supervisor) (date)