

***Lactobacillus crispatus*, Strain 125-2-CHN**

Catalog No. HM-638

Product Description:

Lactobacillus crispatus (*L. crispatus*), strain 125-2-CHN is a vaginal isolate from a healthy Chinese woman obtained in 2007. HM-638 was produced by the inoculation of BEI Resources seed lot 59905634 into Lactobacilli MRS broth and incubated for 1 day at 37°C in an aerobic atmosphere with 5% CO₂. The material from the initial growth was passaged once on Lactobacilli MRS agar for 1 day at 37°C in an aerobic atmosphere with 5% CO₂ to produce this lot. Quality control testing was completed under propagation conditions unless otherwise noted.

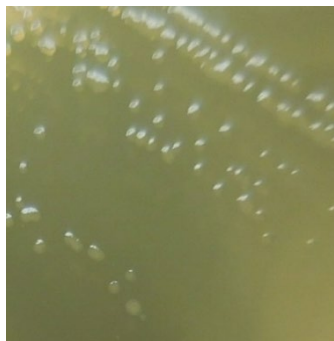
Note: Quality control of HMP material is only performed to demonstrate that the material distributed by BEI Resources is identical to the deposited material. It should not be considered a complete characterization of the deposited organism.

Lot: 70042605

Manufacturing Date: 03MAR2021

TEST	SPECIFICATIONS	RESULTS
Phenotypic Analysis Cellular morphology Colony morphology Motility (wet mount)	Gram-positive rods Report results Non-motile	Gram-positive rods Circular, convex, entire, smooth and cream (Figure 1) Non-motile
Genotypic Analysis Sequencing of 16S ribosomal RNA gene (~ 1490 base pairs)	≥ 99% sequence identity to <i>L. crispatus</i> , strain 125-2-CHN (GenBank: ACPV01000147.1)	99.9% sequence identity to <i>L. crispatus</i> , strain 125-2-CHN (GenBank: ACPV01000147.1)
Purity (post-freeze) Aerobic with 5% CO ₂ 7 days at 37°C on Tryptic Soy agar with 5% defibrinated sheep blood	Growth consistent with expected colony morphology	Growth consistent with expected colony morphology
Viability (post-freeze)	Growth	Growth

Figure 1: Colony Morphology



/Heather Couch/

Heather Couch

15 NOV 2021

Program Manager or designee, ATCC Federal Solutions

ATCC®, on behalf of BEI Resources, hereby represents and warrants that the material provided under this certificate has been subjected to the tests and procedures specified and that the results described, along with any other data provided in this certificate, are true and accurate to the best of ATCC®'s knowledge.

ATCC® is a trademark of the American Type Culture Collection.

You are authorized to use this product for research use only. It is not intended for human use.

