

**Rhodococcus erythropolis, Strain SK121**

**Catalog No. HM-116**

**Product Description:**

*Rhodococcus erythropolis* (*R. erythropolis*), strain SK121 was isolated from normal skin of the left arm of a 47-year-old woman. HM-116 was produced by the inoculation of BEI Resources seed lot 60464583 into Brain Heart Infusion broth and incubated for 1 day at 30°C in an aerobic atmosphere. Broth inoculum was added to Brain Heart Infusion agar kolles, which were grown for 2 days at 30°C to produce this lot.

Note: Quality control of HMP material is only performed to demonstrate that the material distributed by BEI Resources is identical to the deposited material. It should not be considered a complete characterization of the deposited organism.

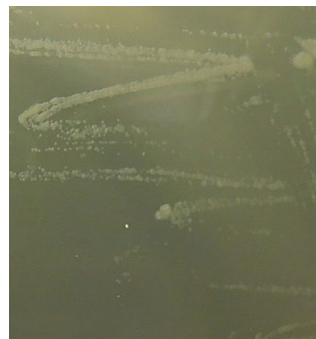
**Lot: 70044520**

**Manufacturing Date: 18JUN2021**

TEST	SPECIFICATIONS	RESULTS
<b>Phenotypic Analysis</b> Cellular morphology 1 day at 30°C in an aerobic atmosphere on Brain Heart Infusion agar Colony morphology 1 day at 30°C in an aerobic atmosphere on Brain Heart Infusion agar Motility	Gram-positive rods  Report results  Report results	Gram-positive rods  Circular, convex, entire, smooth and cream (Figure 1)  Non-motile
<b>Genotypic Analysis</b> Sequencing of 16S ribosomal RNA gene (~ 1440 base pairs)	≥ 99% sequence identity to <i>R. erythropolis</i> , strain SK121 (GenBank: ACNO01000030.1)	99.24% sequence identity to <i>R. erythropolis</i> , strain SK121 (GenBank: ACNO01000030.1) <sup>1</sup>
<b>Purity (post-freeze)</b> 8 days at 30°C in an aerobic atmosphere on Brain Heart Infusion agar	Growth consistent with expected colony morphology	Growth consistent with expected colony morphology
<b>Viability (post-freeze)</b> 1 day at 30°C in an aerobic atmosphere on Brain Heart Infusion agar	Growth	Growth

<sup>1</sup>Also consistent with other *Rhodococcus* species

**Figure 1: Colony Morphology**



/Heather Couch/

Heather Couch

29 NOV 2021

Program Manager or designee, ATCC Federal Solutions

ATCC®, on behalf of BEI Resources, hereby represents and warrants that the material provided under this certificate has been subjected to the tests and procedures specified and that the results described, along with any other data provided in this certificate, are true and accurate to the best of ATCC®'s knowledge.

ATCC® is a trademark of the American Type Culture Collection.

You are authorized to use this product for research use only. It is not intended for human use.

