

Genomic RNA from SARS-Related Coronavirus 2, Isolate hCoV-19/USA/GA-EHC-2811C/2021 (Lineage B.1.1.529; Omicron Variant)

Catalog No. NR-56494

Product Description:

Genomic RNA was isolated from a preparation of cell lysate and supernatant from *Homo sapiens* lung adenocarcinoma epithelial cells (Calu-3; ATCC® HTB-55™) infected with SARS-CoV-2, isolate hCoV-19/USA/GA-EHC-2811C/2021. (BEI Resources lot 70050025) using QIAamp® Viral RNA Mini Kit (Qiagen® 52906). The viral genomic RNA is in a background of cellular nucleic acid and carrier RNA.

Lot: 70050205

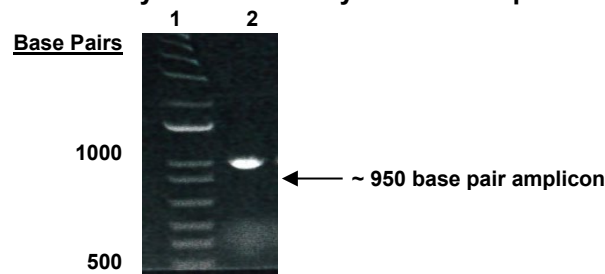
Manufacturing Date: 12JAN2022

TEST	SPECIFICATIONS	RESULTS
Genotypic Analysis Sequencing of species-specific region (~870 nucleotides)	≥ 98% identity with SARS-CoV-2, hCoV-19/USA/GA-EHC-2811C/2021 (GISAID: EPI_ISL_7171744)	100% identity with SARS-CoV-2, hCoV-19/USA/GA-EHC-2811C/2021 (GISAID: EPI_ISL_7171744)
Functional Activity by RT-PCR Amplification¹ ORF1ab	~ 950 base pair amplicon	~ 950 base pair amplicon (Figure 1)
Genome Copy Number Using BioRad QX200 Droplet Digital PCR (ddPCR™) System (Post vial; 27 replicates)	Report results	1.3 × 10 ⁷ genome copies per mL
Virus Inactivation 10% of total yield inoculated on Calu-3 cells and evaluated for cytopathic effect and by qPCR after serial passage ²	No viable virus detected	No viable virus detected

¹Amplified using iTaq™ Universal SYBR Green One-step Kit (Bio-Rad® 172-5151) with 5 µL of NR-56494 in a 50 µL reaction

²Use of the QIAamp® Viral RNA Mini Kit has been demonstrated to consistently inactivate 100% of SARS-CoV-2 as shown by the absence of cytopathic effect (CPE) and viral RNA expression by qPCR after plating the entire extract on Calu-3 cells for two passages.

Figure 1: Functional Activity of NR-56494 by RT-PCR Amplification



Lane 1: Invitrogen™ TrackIt™ 1 Kb Plus DNA Ladder
Lane 2: PCR product from 1 µL of NR-56494

/Heather Couch/
Heather Couch

Program Manager or designee, ATCC Federal Solutions

25 FEB 2022

ATCC®, on behalf of BEI Resources, hereby represents and warrants that the material provided under this certificate has been subjected to the tests and procedures specified and that the results described, along with any other data provided in this certificate, are true and accurate to the best of ATCC®'s knowledge.

ATCC® is a trademark of the American Type Culture Collection.

You are authorized to use this product for research use only. It is not intended for human use.

