

***Proteus mirabilis*, Strain WGLW6**

Catalog No. HM-753

Product Description:

Proteus mirabilis (*P. mirabilis*), strain WGLW6 was isolated was isolated from a stool sample of a mouse with *T-bet*^{-/-} × *Rag2*^{-/-} ulcerative colitis (TRUC) in Boston, Massachusetts, USA. HM-753 was produced by the inoculation of BEI Resources seed lot 63025340 into Nutrient broth for 1 day at 37°C in an aerobic atmosphere. The material from the initial growth was added to Tryptic Soy agar with 5% defibrinated sheep blood kolles, which were grown for 1 day at 37°C in an aerobic atmosphere to produce this lot.

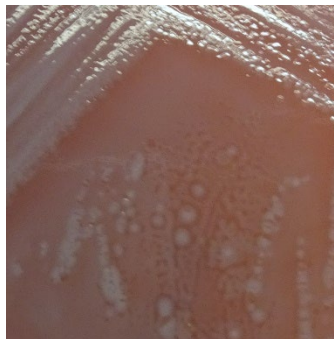
Note: Quality control of HMP material is only performed to demonstrate that the material distributed by BEI Resources is identical to the deposited material. It should not be considered a complete characterization of the deposited organism.

Lot: 70044519

Manufacturing Date: 21MAY2021

TEST	SPECIFICATIONS	RESULTS
Phenotypic Analysis Cellular morphology 1 day at 37°C in an aerobic atmosphere on Tryptic Soy agar with 5% defibrinated sheep blood Colony morphology 1 day at 37°C in an aerobic atmosphere on Tryptic Soy agar with 5% defibrinated sheep blood Motility (wet mount)	Gram-negative rods Report results Report results	Gram-negative rods Circular, flat, entire, opaque and gray (Figure 1) Motile
Genotypic Analysis Sequencing of 16S ribosomal RNA gene (~ 1480 base pairs)	≥ 99% sequence identity to <i>P. mirabilis</i> , strain WGLW6 (GenBank: AMGT01000011.1)	99.86% sequence identity to <i>P. mirabilis</i> , strain WGLW6 (GenBank: AMGT01000011.1)
Purity (post-freeze) 7 days at 37°C in an aerobic atmosphere with and without 5% CO ₂ on Tryptic Soy agar with 5% defibrinated sheep blood	Growth consistent with expected colony morphology	Growth consistent with expected colony morphology
Viability (post-freeze) 1 day at 37°C in an aerobic atmosphere on Tryptic Soy agar with 5% defibrinated sheep blood	Growth	Growth

Figure 1: Colony Morphology



/Heather Couch/

Heather Couch

03 DEC 2021

Program Manager or designee, ATCC Federal Solutions

ATCC®, on behalf of BEI Resources, hereby represents and warrants that the material provided under this certificate has been subjected to the tests and procedures specified and that the results described, along with any other data provided in this certificate, are true and accurate to the best of ATCC®'s knowledge.

ATCC® is a trademark of the American Type Culture Collection.

You are authorized to use this product for research use only. It is not intended for human use.

