

Genomic RNA from Human Respiratory Syncytial Virus, B1

Catalog No. NR-48831

Product Description:

Genomic RNA was isolated from a preparation of cell lysate and supernatant from *Cercopithecus aethiops* kidney epithelial cells (Vero; ATCC® CCL-81™) infected with human respiratory syncytial virus (RSV), B1 (depositor lot 0671) using QIAamp® Viral RNA Mini Kit (Qiagen® 52904). The viral genomic RNA is in a background of cellular nucleic acid and carrier RNA.

Lot: 70041179

Manufacturing Date: 29OCT2021

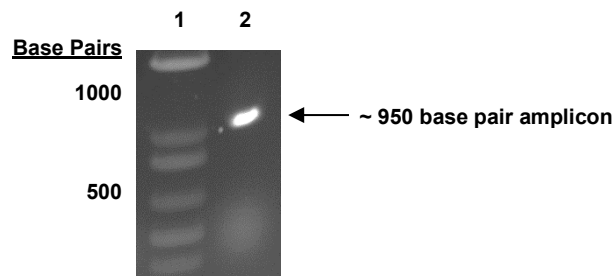
TEST	SPECIFICATIONS	RESULTS
Genotypic Analysis Sequencing of species-specific region (~ 1020 nucleotides)	≥ 98% identity with human RSV, B1 (GenBank: AF013254)	99.9% identity with human RSV, B1 (GenBank: AF013254)
Functional Activity by RT-PCR Amplification¹ Glycoprotein gene	~ 950 base pair amplicon	~ 950 base pair amplicon (Figure 1)
Estimated Concentration (post-dilution) by Qubit® Measurement (Viral, Cellular and Carrier)²	Report results	6.5 ng per 100 µL (0.07 ng per µL)
Estimated Amount per Vial²	Report results	6.5 ng
Virus Inactivation 10% of total yield inoculated on Vero cells and evaluated for cytopathic effect and by FA stain after serial passage ³	No viable virus detected	No viable virus detected

¹Amplified using iTaq™ Universal SYBR Green One-step Kit (Bio-Rad® 172-5151) with 5 µL of NR-44831 in a 50 µL reaction

²Measurement is determined prior to dilution due to the limit of detection of the quantification method

³Use of the QIAamp® Viral RNA Mini Kit has been demonstrated to consistently inactivate 100% of RSV as shown by the absence of cytopathic effect (CPE) and IFA after plating the entire extract on virus-susceptible cells for two passages.

Figure 1: Functional Activity of NR-48831 by RT-PCR Amplification of Glycoprotein Gene



Lane 1: Invitrogen™ TrackIt™ 1 Kb Plus DNA Ladder
Lane 2: PCR product from 1 µL of NR-48831

/Heather Couch/
Heather Couch

25 APR 2022

Program Manager or designee, ATCC Federal Solutions

ATCC®, on behalf of BEI Resources, hereby represents and warrants that the material provided under this certificate has been subjected to the tests and procedures specified and that the results described, along with any other data provided in this certificate, are true and accurate to the best of ATCC®'s knowledge.

ATCC® is a trademark of the American Type Culture Collection.

You are authorized to use this product for research use only. It is not intended for human use.

