

Genomic RNA from Porcine Respiratory Coronavirus, ISU-1

Catalog No. NR-48572

Product Description:

Genomic RNA was isolated from a preparation of cell lysate and supernatant from *Sus scrofa* testicular fibroblast cells [(ST cells); ATCC® CRL-1746™] infected with porcine respiratory coronavirus (PRCV), ISU-1 (BEI Resources lot 64347311) using QIAamp® Viral RNA Mini Kit (Qiagen® 52906). The viral genomic RNA is in a background of cellular nucleic acid and carrier RNA.

Lot: 70041157

Manufacturing Date: 12NOV2021

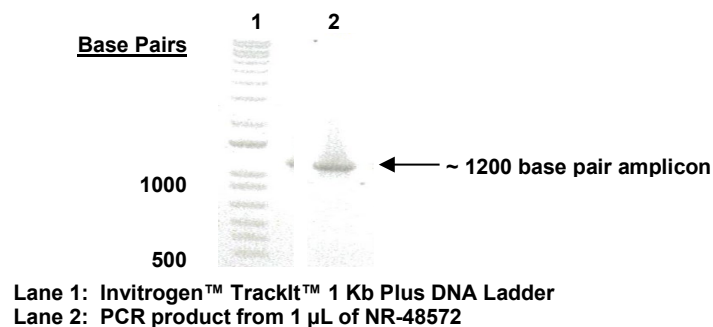
TEST	SPECIFICATIONS	RESULTS
Genotypic Analysis Sequencing of species-specific region (~ 1050 nucleotides)	≥ 98% identity with PRCV, ISU-1 (GenBank: DQ811787)	99.7% identity with PRCV, ISU-1 (GenBank: DQ811787)
Functional Activity by RT-PCR Amplification¹ RdRp gene	~ 1200 base pair amplicon	~ 1200 base pair amplicon (Figure 1)
Estimated Concentration (post-dilution) by Qubit® Measurement (Viral, Cellular and Carrier)²	Report results	32.2 ng per 100 µL (0.03 µg per mL)
Estimated Amount per Vial²	Report results	32.2 ng
Virus Inactivation 10% of total yield inoculated on ST cells and evaluated for cytopathic effect ³	No viable virus detected	No viable virus detected

¹Amplified using iTaq™ Universal SYBR Green One-step Kit (Bio-Rad® 172-5151) with 5 µL of NR-48572 in a 50 µL reaction

²Measurement is determined pre-vial prior to dilution due to the limit of detection of the quantification method

³Use of the QIAamp® Viral RNA Mini Kit has been demonstrated to consistently inactivate 100% of PRCV as shown by the absence of cytopathic effect (CPE) after plating the entire extract on virus-susceptible cells for two passages.

Figure 1: Functional Activity of NR-48572 by RT-PCR Amplification of RdRp Gene



/Heather Couch/

Heather Couch

25 APR 2022

Program Manager or designee, ATCC Federal Solutions

ATCC®, on behalf of BEI Resources, hereby represents and warrants that the material provided under this certificate has been subjected to the tests and procedures specified and that the results described, along with any other data provided in this certificate, are true and accurate to the best of ATCC®'s knowledge.

ATCC® is a trademark of the American Type Culture Collection.

You are authorized to use this product for research use only. It is not intended for human use.

