

Genomic RNA from Human Respiratory Syncytial Virus, A2001/3-12

Catalog No. NR-44227

Product Description:

Genomic RNA was isolated from a preparation of cell lysate and supernatant from *Homo sapiens* carcinoma cells (HEp-2; ATCC® CCL-23™) infected with human respiratory syncytial virus (RSV), A2001/3-12 (BEI Resources lot 70039170) using QIAamp® Viral RNA Mini Kit (Qiagen® 52906). The viral genomic RNA is in a background of cellular nucleic acid and carrier RNA.

Lot: 70041159

Manufacturing Date: 30NOV2022

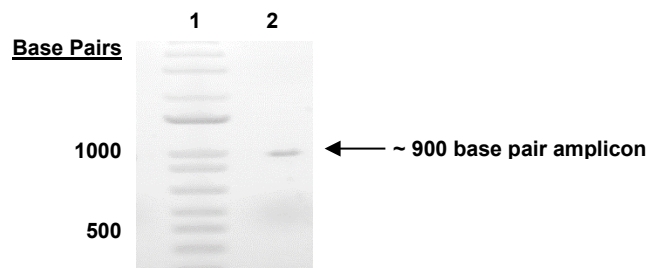
TEST	SPECIFICATIONS	RESULTS
Genotypic Analysis Sequencing of species-specific region (~ 850 nucleotides)	≥ 98% identity with human RSV, A2001/3-12 virus (GenBank: JX069799)	99.9% identity with human RSV, A2001/3-12 virus (GenBank: JX069799)
Functional Activity by RT-PCR Amplification¹ Glycoprotein gene	~ 900 base pair amplicon	~ 900 base pair amplicon (Figure 1)
Estimated Concentration (post-dilution) by Qubit® Measurement (Viral, Cellular and Carrier)²	Report results	3.9 ng per 100 µL
Estimated Amount per Vial	Report Results	3.9 ng
Virus Inactivation 10% of total yield inoculated on HEp-2 cells and evaluated for cytopathic effect and by direct fluorescent antibody (DFA) assay after serial passage ³	No viable virus detected	No viable virus detected

¹Amplified using iTaq™ Universal SYBR Green One-step Kit (Bio-Rad® 172-5151) with 5 µL of NR-44227 in a 50 µL reaction

²Measurement is determined pre-vial prior to dilution due to the limit of detection of the quantification method

³Use of the QIAamp® Viral RNA Mini Kit has been demonstrated to consistently inactivate 100% of RSV as shown by the absence of cytopathic effect (CPE) and DFA (Light Diagnostics 5022) after plating the entire extract on virus-susceptible cells for two passages.

Figure 1: Functional Activity of NR-44227 by RT-PCR Amplification of Glycoprotein Gene



Lane 1: Invitrogen™ TrackIt™ 1 Kb Plus DNA Ladder
Lane 2: PCR product from 1 µL of NR-44227

/Heather Couch/
Heather Couch

Program Manager or designee, ATCC Federal Solutions

09 MAY 2022

ATCC®, on behalf of BEI Resources, hereby represents and warrants that the material provided under this certificate has been subjected to the tests and procedures specified and that the results described, along with any other data provided in this certificate, are true and accurate to the best of ATCC®'s knowledge.

ATCC® is a trademark of the American Type Culture Collection.

You are authorized to use this product for research use only. It is not intended for human use.

