

Genomic RNA from Human Respiratory Syncytial Virus, A2000/3-4

Catalog No. NR-44230

Product Description:

Genomic RNA was isolated from a preparation of cell lysate and supernatant from *Homo sapiens* carcinoma cells (HEp-2; ATCC® CCL-23™) infected with Human Respiratory Syncytial Virus (RSV), A2000/3-4 (BEI Resources lot 70039169) using QIAamp® Viral RNA Mini Kit (Qiagen® 52906). The viral genomic RNA is in a background of cellular nucleic acid and carrier RNA.

Lot: 70048661

Manufacturing Date: 06DEC2021

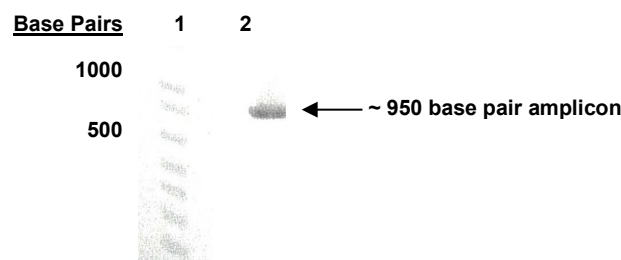
TEST	SPECIFICATIONS	RESULTS
Genotypic Analysis Sequencing of species-specific region (~ 870 nucleotides)	≥ 98% identity with human RSV, A2000/3-4 virus (GenBank: JX069803)	99.8% identity with human RSV, A2000/3-4 virus (GenBank: JX069803)
Functional Activity by RT-PCR Amplification¹ Glycoprotein gene	~ 950 base pair amplicon	~ 950 base pair amplicon (Figure 1)
Estimated Concentration (post-dilution) by Qubit® Measurement (Viral, Cellular and Carrier)²	Report results	38.3 ng per 100 µL (0.38 ng per µL)
Estimated Amount per Vial²	Report Results	38.3 ng
Virus Inactivation 10% of total yield inoculated on HEp-2 cells and evaluated for cytopathic effect after serial passage ³	No viable virus detected	No viable virus detected

¹Amplified using iTaq™ cDNA Kit (Bio-Rad® 170-8891) with 5 µL of NR-44230 in a 50 µL reaction

²Measurement is determined pre-vial prior to dilution due to the limit of detection of the quantification method

³Use of the QIAamp® Viral RNA Mini Kit has been demonstrated to consistently inactivate 100% of RSV as shown by the absence of cytopathic effect (CPE) after plating the entire extract on virus-susceptible cells for two passages.

Figure 1: Functional Activity of NR-44230 by RT-PCR Amplification of Glycoprotein Gene



Lane 1: Invitrogen™ TrackIt™ 1 Kb Plus DNA Ladder

Lane 2: PCR product from 1 µL of NR-44230

/Heather Couch/
Heather Couch

13 MAY 2022

Program Manager or designee, ATCC Federal Solutions

ATCC®, on behalf of BEI Resources, hereby represents and warrants that the material provided under this certificate has been subjected to the tests and procedures specified and that the results described, along with any other data provided in this certificate, are true and accurate to the best of ATCC®'s knowledge.

ATCC® is a trademark of the American Type Culture Collection.

You are authorized to use this product for research use only. It is not intended for human use.

