

Genomic DNA from Vaccinia Virus, Western Reserve (NIAID, Tissue Culture Adapted)

Catalog No. NR-2639

Product Description:

Genomic DNA was isolated from a preparation of cell lysate and supernatant from African green monkey cells (Vero; ATCC® CCL-81™) infected with vaccinia virus, Western Reserve (WR; NIAID, tissue culture adapted) (BEI Resources lot 3579605) using QIAamp® Viral RNA Mini Kit (Qiagen® 52904).

Lot: 64347315

Manufacturing Date: 28JUN2016

TEST	SPECIFICATIONS	RESULTS
Genotypic Analysis Sequencing of species-specific region (~ 1000 nucleotides)	≥ 98% identity with vaccinia virus, Western Reserve (GenBank: AY243312)	100% identity with vaccinia virus, Western Reserve (GenBank: AY243312)
Functional Activity by RT-PCR Amplification¹	~ 1100 base pair amplicon	~ 1100 base pair amplicon (Figure 1)
Estimated Concentration by PicoGreen® Measurement (Viral and Cellular)²	Report results	7.0 ng per 100 µL
Estimated Amount per Vial²	Report results	7.0 ng
Genome Copy Number Using qPCR³ (Post-vial)	Report results	3.48 × 10 ⁷ genome copies per mL
Virus Inactivation 10% of total yield inoculated on Vero cells and evaluated for cytopathic effect ⁴	No viable virus detected	No viable virus detected

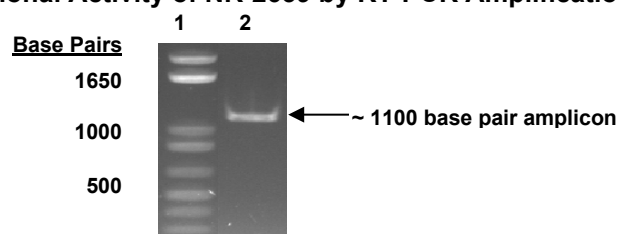
¹Amplified using iTaq™ DNA Polymerase (Bio-Rad 170-8870) with 5 µL of NR-2639 in a 50 µL reaction

²Measurement is determined pre-vial prior to dilution due to the limit of detection of the quantification method

³Testing performed June 2022; other QC performed 2016

⁴Use of the QIAamp® Viral RNA Mini Kit has been demonstrated to consistently inactivate 100% of vaccinia virus as shown by the absence of cytopathic effect (CPE) after plating the entire extract on virus-susceptible cells.

Figure 1: Functional Activity of NR-2639 by RT-PCR Amplification



Lane 1: Invitrogen™ TrackIt™ 1 Kb Plus DNA Ladder

Lane 2: PCR product from NR-2639

/Sonia Bjorum Brower/

Sonia Bjorum Brower

23 JUN 2022

Lead Technical Writer or designee, ATCC Federal Solutions

ATCC®, on behalf of BEI Resources, hereby represents and warrants that the material provided under this certificate has been subjected to the tests and procedures specified and that the results described, along with any other data provided in this certificate, are true and accurate to the best of ATCC®'s knowledge.

ATCC® is a trademark of the American Type Culture Collection.

You are authorized to use this product for research use only. It is not intended for human use.



BEI Resources

www.beiresources.org

E-mail: contact@beiresources.org

Tel: 800-359-7370

Fax: 703-365-2898