

Genomic DNA from Vaccinia Virus, New York City Board of Health (Wyeth, Calf adapted)

Catalog No. NR-2638

Product Description:

Genomic DNA was isolated from a preparation of cell lysate and supernatant from *Cercopithecus aethiops* kidney epithelial cells (Vero; ATCC® CCL-81™) infected with vaccinia virus, NYCBOH (BEI Resources lot 60305766) using QIAamp® Viral RNA Mini Kit (Qiagen® 52904).

Lot: 63421353

Manufacturing Date: 04MAY2015

TEST	SPECIFICATIONS	RESULTS
Genotypic Analysis Sequencing of species-specific region (~ 550 nucleotides)	≥ 98% identity with vaccinia virus, Dryvax® clone DPP15 (GenBank: JN654981)	99% identity with vaccinia virus, Dryvax® clone DPP15 (GenBank: JN654981)
Functional Activity by RT-PCR Amplification¹	~ 1100 base pair amplicon	~ 1100 base pair amplicon (Figure 1)
Estimated Concentration by PicoGreen® Measurement (Viral and Cellular)²	Report results	3.3 ng per 100 µL
Estimated Amount per Vial²	Report results	3.3 ng
Genome Copy Number Using qPCR³ (Post-vial)	Report results	6.75 × 10 ⁶ genome copies per mL
Virus Inactivation 10% of total yield inoculated on Vero cells and evaluated for cytopathic effect ^{3,4}	No viable virus detected	No viable virus detected

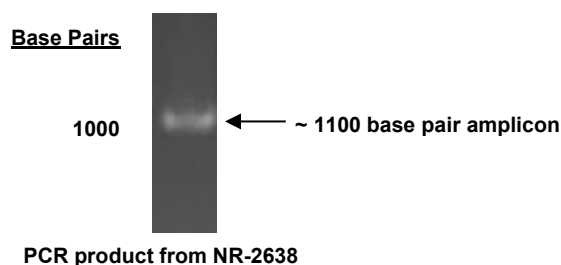
¹Amplified using iTaq™ DNA Polymerase (BioRad 170-8870) with 5 µL of NR-2638 in a 50 µL reaction

²Measurement is determined pre-vial prior to dilution due to the limit of detection of the quantification method

³Testing performed June 2022; other QC performed 2015.

⁴Use of the QIAamp® Viral RNA Mini Kit has been demonstrated to consistently inactivate 100% of vaccinia virus as shown by the absence of cytopathic effect (CPE) after plating the entire extract on virus-susceptible cells.

Figure 1: Functional Activity of NR-2638 by RT-PCR Amplification



/Sonia Bjorun Brower/

Sonia Bjorun Brower

23 JUN 2022

Lead Technical Writer or designee, ATCC Federal Solutions

ATCC®, on behalf of BEI Resources, hereby represents and warrants that the material provided under this certificate has been subjected to the tests and procedures specified and that the results described, along with any other data provided in this certificate, are true and accurate to the best of ATCC®'s knowledge.

ATCC® is a trademark of the American Type Culture Collection.

You are authorized to use this product for research use only. It is not intended for human use.

