

Spike Glycoprotein Receptor Binding Domain (RBD) from SARS-Related Coronavirus 2, Wuhan-Hu-1 with C-Terminal Histidine Tag, Recombinant from HEK293 Cells

Catalog No. NR-56133

This reagent is the tangible property of the U.S. Government.

Product Description:

A recombinant form of the spike (S) glycoprotein receptor binding domain (RBD) from severe acute respiratory syndrome-related coronavirus 2 (SARS-CoV-2), Wuhan-Hu-1 (GenPept: [QHD43416](#)) was produced by transient transfection into human embryonic kidney HEK293 cells and purified by immobilized metal affinity chromatography. NR-56133 lacks the signal sequence and contains 223 residues (ectodomain) of the SARS-CoV-2 spike glycoprotein RBD; the recombinant protein includes a C-terminal hexa-histidine tag. Quality control testing was completed just prior to vialing.

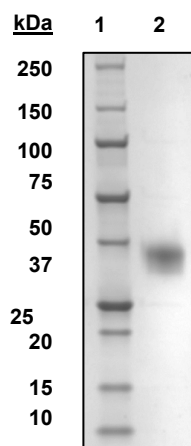
Lot: 70047738

Manufacturing Date: 20SEP2021

TEST	SPECIFICATIONS	RESULTS
Appearance	Clear and colorless	Clear and colorless
SDS-PAGE Analysis	Report results	Protein band of > 37 kDa represents 97.4% of total staining intensity (Figure 1)
Concentration by Bicinchoninic Acid Assay Bovine Serum Albumin (standard)	Report results	1.0 mg per mL
Final Product Amount per vial Volume per vial	Report results Report results	100 µg 100 µL
Functional Activity by Western Blot Analysis Monoclonal anti-histidine tag	Reactive	Reactive (Figure 2) ¹
Sterility	0.22 µm sterile-filtered	0.22 µm sterile-filtered

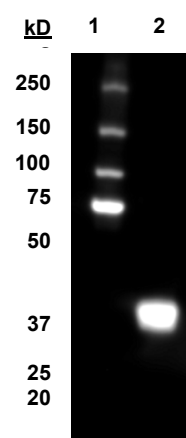
¹Using a 1:1000 dilution of mouse monoclonal anti-histidine tag (R&D Systems, Inc., His-Tag HRP-Conjugated Antibody, Catalog No. MAB050H) as primary antibody.

Figure 1: SDS-PAGE Analysis



Lane 1: Precision Plus Protein™ Standard
Lane 2: NR-56133 (1.5 µg)

Figure 2: Anti-Histidine Western Blot Analysis



Lane 1: Precision Plus Protein™ Standard
Lane 2: NR-56133 (1.5 µg)

/Sonia Bjorum Brower/

Sonia Bjorum Brower

08 JUL 2022

Lead Technical Writer or designee, ATCC Federal Solutions

ATCC®, on behalf of BEI Resources, hereby represents and warrants that the material provided under this certificate has been subjected by the contributor to the tests and procedures specified and that the results described, along with any other data provided in this certificate, are true and accurate to the best of ATCC®'s knowledge.

ATCC® is a trademark of the American Type Culture Collection.

You are authorized to use this product for research use only. It is not intended for human use.

