

***Staphylococcus aureus* subsp. *aureus*, Strain JE2, Transposon Mutant NE97 (SAUSA300_2130)**

Catalog No. NR-46640

Product Description:

Staphylococcus aureus (*S. aureus*) subsp. *aureus*, transposon mutant NE97 was derived from *S. aureus* subsp. *aureus*, strain JE2. Mutagenesis occurred through the use of the *mariner*-based transposon *bursa aurealis* resulting in an erythromycin-resistant deletion strain of JE2. *S. aureus* subsp. *aureus*, transposon mutant NE97 was created by disruption of SAUSA300_2130, which encodes for UTP-glucose-1-phosphate uridylyltransferase family protein. NR-46640 lot 70050744 was produced by inoculation of deposited material into Tryptic Soy broth with 5 µg per mL erythromycin and incubated for 1 day at 37°C in an aerobic atmosphere. Broth inoculum was added to Tryptic Soy agar with 5 µg per mL erythromycin kolles, which were grown for 1 day at 37°C in an aerobic atmosphere. Quality control testing was completed under propagation conditions unless otherwise noted.

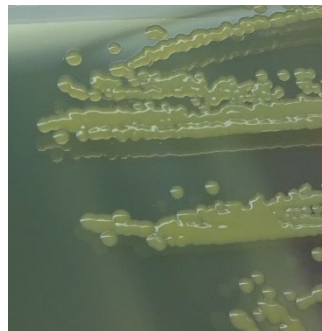
Note: Prior to initiating work, it is recommended that the presence and location of the transposon is confirmed. Gene specific primers should be paired with either the “Upstream” primer (5'-CTCGATTCTATTAACAAGGG-3') for transposons in the “plus” orientation or the “Buster” primer (5'-GCTTTTTCTAAATGTTTTTTAAGTAAATCAAGTAC-3') for transposons in the “minus” orientation. For additional information, refer to Fey, P. D., et al. “A Genetic Resource for Rapid and Comprehensive Phenotype Screening of Nonessential *Staphylococcus aureus* Genes.” *mBio*. 4 (2013): e00537-12. PubMed: 23404398.

Lot: 70050744

Manufacturing Date: 03MAR2022

TEST	SPECIFICATIONS	RESULTS
Phenotypic Analysis Cellular morphology Colony morphology Motility (wet mount)	Gram-positive cocci Report results Report results	Gram-positive cocci Circular, convex, entire, smooth and cream (Figure 1) Non-motile
Confirmation of Transposon Insertion	Resistant to erythromycin	Resistant to erythromycin
Purity (post-freeze) 7 days at 37°C in an aerobic atmosphere with 5% CO ₂ on Tryptic Soy agar with 5% defibrinated sheep blood	Growth consistent with expected colony morphology	Growth consistent with expected colony morphology
Viability (post-freeze)	Growth	Growth

Figure 1: Colony Morphology



/Sonia Bjorum Brower/

Sonia Bjorum Brower

18 JUL 2022

Lead Technical Writer or designee, ATCC Federal Solutions

ATCC®, on behalf of BEI Resources, hereby represents and warrants that the material provided under this certificate has been subjected to the tests and procedures specified and that the results described, along with any other data provided in this certificate, are true and accurate to the best of ATCC®'s knowledge.

ATCC® is a trademark of the American Type Culture Collection.

You are authorized to use this product for research use only. It is not intended for human use.

