

MPT32/Apa (Gene Rv1860), Purified Native Protein from *Mycobacterium tuberculosis*, Strain H37Rv**Catalog No. NR-14862**

This reagent is the tangible property of the U.S. Government.

Product Description:

NR-14862 is a preparation of native MPT32/Apa (gene Rv1860) purified from sterile-filtered *Mycobacterium tuberculosis*, strain H37Rv culture filtrate protein fraction. The culture filtrate protein fraction was precipitated with 40% ammonium sulfate, applied to a ConA column, eluted, concentrated, dialyzed, applied to a phenyl sepharose column and eluted. The purified MPT32/Apa was dialyzed in 10 mM ammonium bicarbonate.

Lot: 70049269**Manufacturing Date: 27JAN2022**

Production and QC testing were performed by Colorado State University (CSU). The CSU documentation for lot 22.Rv.1.24.45kDa is attached.

ATCC®, on behalf of BEI Resources, hereby represents and warrants that the material provided under this certificate has been subjected by the contractor to the tests and procedures specified and that the results described, along with any other data provided in this certificate, are true and accurate to the best of ATCC®'s knowledge.

ATCC® is a trademark of the American Type Culture Collection.

You are authorized to use this product for research use only. It is not intended for human use.



WORK SHEET FOR PURIFIED NATIVE PROTEINS

General Information

BEI Catalog Number: NR-14862
Product Description: 45 kDa Glycoprotein (Mpt32, Apa, Rv1860)
CSU Lot Number: 22.Rv.1.24.45kDa
Species: *Mycobacterium tuberculosis*
Strain: H37Rv

Purification Information

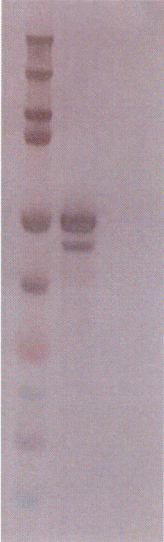
Starting material: Pooled ConA bound protein- RS #1 pg 1-2, ML BEI Prod #4 pg 79-80
Starting material (select one):
 CFP: Filter Sterilized Yes
 Cells: Irradiated NA
Viability Test Performed: No Viable Organism Detected
Protocol used (SOP #'s): PP022.6
Date started: 1.26.22
Date completed: 1.27.22
Notebook; page(s): KB BEI#1 pgs 20-21
Additional notes (if applicable): _____

Quality Control Information

Clarity of product/suspension after dialysis: Clear
BCA: 3.98 $\mu\text{g}/\mu\text{l}$ Notebook and page(s): KB BEI#1 pg 22
Total Protein: 19.9 mg
Silver Stain Date: 2.3.22 Notebook and page(s): KB BEI#1 pg23
Western blot Date: 2.8.22 Antibody used: CS-93
Notebook and page(s): KB BEI#1 pg23
Mass Spectrometry information/file (if applicable): _____

QC Gel:

Silver Stain:



Western: 2 μg and 1 μg protein load



Aliquot Information: 39 x 0.5 mg aliquots

[Signature] 2/9/22
(Research Associate) (date)

[Signature] 2/15/22
(Laboratory Supervisor) (date)