

**Enterococcus faecium, Strain TX0082**

**Catalog No. HM-460**

**Product Description:**

*Enterococcus faecium* (*E. faecium*), strain TX0082 was isolated in 1999 from the blood of a human patient with endocarditis in Houston, Texas, USA. HM-460 lot 70046940 was produced by inoculation of BEI Resources seed lot 70003836 into Brain Heart Infusion broth and incubated for 1 day at 37°C in an aerobic atmosphere with 5% CO<sub>2</sub>. The material from the initial growth was passaged once in Tryptic Soy agar with 5% defibrinated sheep blood kolles for 1 day at 37°C in an aerobic atmosphere with 5% CO<sub>2</sub> to produce this lot. Quality control testing was completed under propagation conditions unless otherwise noted.

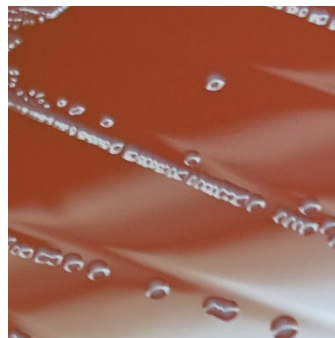
**Note:** Quality control of HMP material is only performed to demonstrate that the material distributed by BEI Resources is identical to the deposited material. It should not be considered a complete characterization of the deposited organism.

**Lot: 70046940**

**Manufacturing Date: 09SEP2021**

TEST	SPECIFICATIONS	RESULTS
<b>Phenotypic Analysis</b> Cellular morphology Colony morphology  Motility (wet mount) VITEK® MS (MALDI-TOF) Hemolysis	Gram-positive cocci Report results  Report results <i>E. faecium</i> Report results	Gram-positive cocci Circular, convex, entire, smooth and gray (Figure 1) Non-motile <i>E. faecium</i> (99.9%) α-hemolytic
<b>Genotypic Analysis</b> Sequencing of 16S ribosomal RNA gene (~ 1450 base pairs)	≥ 99% sequence identity to <i>E. faecium</i> , strain TX0082 (GenBank: AEBU01000036.1)	99.9% sequence identity to <i>E. faecium</i> , strain TX0082 (GenBank: AEBU01000036.1)
<b>Purity (post-freeze)</b> 7 days at 37°C in an aerobic atmosphere with 5% CO <sub>2</sub> on Tryptic Soy agar with 5% defibrinated sheep blood	Growth consistent with expected colony morphology	Growth consistent with expected colony morphology
<b>Viability (post-freeze)</b>	Growth	Growth

**Figure 1: Colony Morphology**



/Heather Couch/

Heather Couch

15 MAR 2022

Program Manager or designee, ATCC Federal Solutions

ATCC®, on behalf of BEI Resources, hereby represents and warrants that the material provided under this certificate has been subjected to the tests and procedures specified and that the results described, along with any other data provided in this certificate, are true and accurate to the best of ATCC®'s knowledge.

ATCC® is a trademark of the American Type Culture Collection.

You are authorized to use this product for research use only. It is not intended for human use.

