

**Streptococcus pyogenes, Strain ABC020060016**

**Catalog No. NR-48703**

**Product Description:**

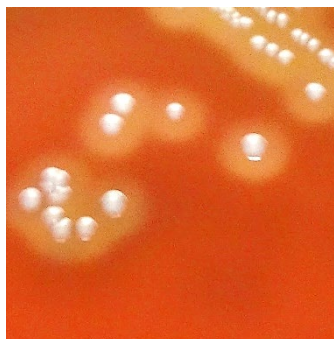
*Streptococcus pyogenes* (*S. pyogenes*), strain ABC020060016 was isolated between 2010 and 2012 from the blood of a human with bacteremia, streptococcal toxic shock syndrome or necrotizing fasciitis in USA. *S. pyogenes*, strain ABC020060016 was deposited as a Group A Streptococcus (GAS) strain. NR-48703 lot 70052293 was produced by the inoculation of BEI Resources seed lot 70001694 Tryptic Soy broth and incubated for 1 day at 37°C in an aerobic atmosphere with 5% CO<sub>2</sub>. Broth inoculum was added to Tryptic Soy agar kolles, which were grown for 1 day at 37°C in an aerobic atmosphere with 5% CO<sub>2</sub> to produce this lot. Quality control testing was completed under propagation conditions unless otherwise noted.

**Lot: 70052293**

**Manufacturing Date: 27APR2022**

TEST	SPECIFICATIONS	RESULTS
<b>Phenotypic Analysis</b> Cellular morphology Colony morphology  Hemolysis Motility (wet mount) Biochemical characterization Catalase VITEK® MS (MALDI-TOF)	Gram-positive cocci Report results  Report results Report results  Negative <i>S. pyogenes</i>	Gram-positive cocci Circular, low convex, entire, smooth and cream (Figure 1) β-hemolytic Non-motile  Negative <i>S. pyogenes</i> (99.9%)
<b>Genotypic Analysis</b> Sequencing of 16S ribosomal RNA gene (~ 1200 base pairs)	≥ 99% sequence identity to <i>S. pyogenes</i> type strain (GenBank: ATXR01000029.1)	100% sequence identity to <i>S. pyogenes</i> type strain (GenBank: ATXR01000029.1)
<b>Purity (post-freeze)</b> 7 days at 37°C in an aerobic atmosphere with 5% CO <sub>2</sub> on Tryptic Soy agar with 5% defibrinated sheep blood	Growth consistent with expected colony morphology	Growth consistent with expected colony morphology
<b>Viability (post-freeze)</b>	Growth	Growth

**Figure 1: Colony Morphology**



/Sonia Bjorum Brower/

Sonia Bjorum Brower

27 JUL 2022

Lead Technical Writer or designee, ATCC Federal Solutions

ATCC®, on behalf of BEI Resources, hereby represents and warrants that the material provided under this certificate has been subjected by ATCC® to the tests and procedures specified and that the results described, along with any other data provided in this certificate, are true and accurate to the best of ATCC®'s knowledge.

ATCC® is a trademark of the American Type Culture Collection.

You are authorized to use this product for research use only. It is not intended for human use.

