

***Mycobacterium tuberculosis*, Strain H37Rv, Purified Phosphatidylinositol Mannosides 1 & 2 (PIM<sub>1,2</sub>)**

**Catalog No. NR-14846**

This reagent is the tangible property of the U.S. Government.

**Product Description:**

NR-14846 is a preparation of the purified phosphatidylinositol mannosides 1 & 2 (PIM<sub>1,2</sub>) cell wall glycolipids of *Mycobacterium tuberculosis*, strain H37Rv.

**Lot: 70048882**

**Manufacturing Date: 19NOV2021**

Production and QC testing were performed by Colorado State University (CSU). The CSU documentation for lot 21.Rv.11.16.02.PIM<sub>1,2</sub> is attached.

ATCC®, on behalf of BEI Resources, hereby represents and warrants that the material provided under this certificate has been subjected by the contractor to the tests and procedures specified and that the results described, along with any other data provided in this certificate, are true and accurate to the best of ATCC®'s knowledge.

ATCC® is a trademark of the American Type Culture Collection.

You are authorized to use this product for research use only. It is not intended for human use.



## WORK SHEET FOR PURIFIED LIPID FRACTION

### General Information

BEI Catalog Number: NR-14846  
CSU Lot Number: 21.Rv.11.16.02.PIM<sub>1,2</sub>  
Fraction Type: phosphatidylinositol mannosides 1,2  
Species: *M. tuberculosis*  
Strain: H37Rv

### Purification Information

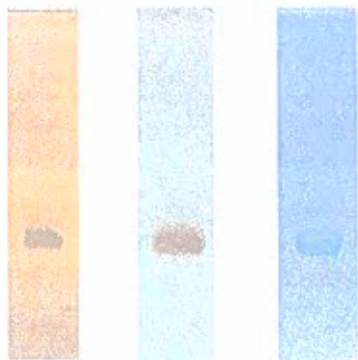
Starting material: 2:1 total lipid Starting Material Lot #: 18.Rv.2.1.31.9.WCg.b  
Cells Irradiated: Yes Viability Test Performed: No Viable Organism Detected  
Protocol used (SOP #'s): PP026.5, SPO31b, SPO32, SPO33, SPO37, SPO45.2, SP022.4  
Date started: 10/7/21  
Date completed: 11/19/21  
Notebook; page(s): Lipids Notebook 10 pp 49-62

### Quality Control Information:

Total amount of PIM<sub>1,2</sub>: 13.7 mg MALDI-TOF completed: 11/16/21  
TLC system: 6S/25/4 CHCl<sub>3</sub>/CH<sub>3</sub>OH/H<sub>2</sub>O TLC date: 11/12/21  
Date dried on N<sub>2</sub> bath: 11/19/21 Notebook and page(s): Lipids 10 pp 63-70

### TLC Analysis:

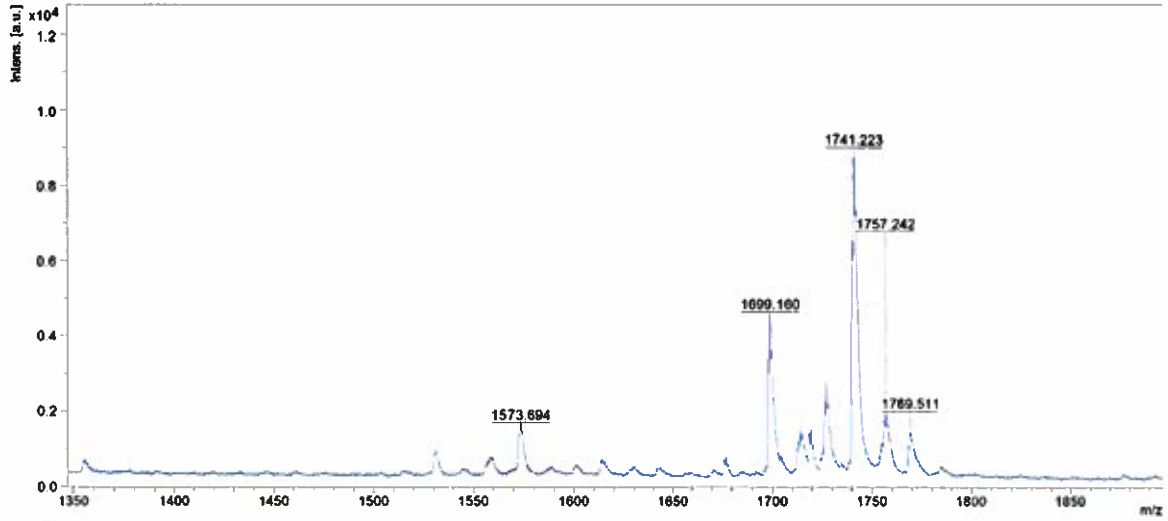
$\alpha$ -naphthol    CuSO<sub>4</sub>    Dittmer-Lester



### Aliquot Information:

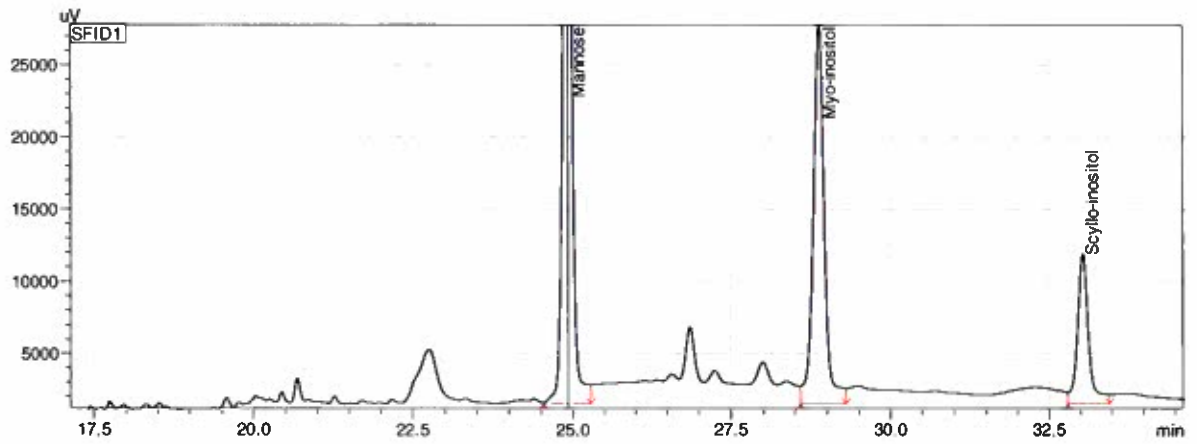
$27 \times 0.5 \text{ mg} = 13.5 \text{ mg}$   
 $1 \times 0.2 \text{ mg} = 0.2 \text{ mg}$   
13.7 mg

# MALDI-TOF



Analyzed 1.0 ug 21.Rv.11.16.02.PIM<sub>1,2</sub> with 1.0 ul DHB matrix in reflector positive mode.

# GC trace:



Injected 5 ug alditol derivative of 21.Rv.11.16.02.PIM<sub>1,2</sub> and analyzed against neutral sugar standards.

*[Signature]*  
(Research Associate)  
11/19/21  
date

*[Signature]*  
(Laboratory Supervisor)  
11/29/21  
date