

Genomic DNA from Vaccinia Virus, IHD

Catalog No. NR-2636

Product Description:

Genomic DNA was isolated from *Macaca mulatta* kidney epithelial cells (LLC-MK2 derivative; ATCC® CCL-27.1™) infected with vaccinia virus, IHD (BEI Resources lot 3579603) using QIAamp® Viral RNA Mini Kit (Qiagen® 52906). The viral genomic DNA is in a background of cellular nucleic acid and carrier RNA.

Lot: 70053991

Manufacturing Date: 25JUL2022

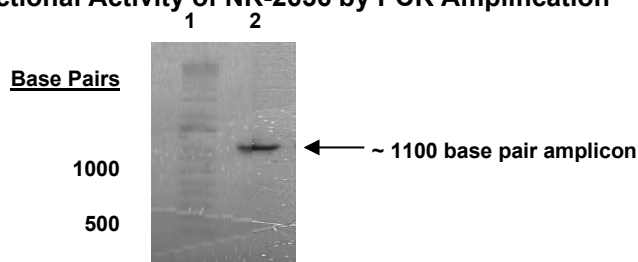
TEST	SPECIFICATIONS	RESULTS
Genotypic Analysis Sequencing of species-specific region (~ 1000 nucleotides)	≥ 98% identity with vaccinia virus, IHD (GenBank: KJ125439)	100% identity with vaccinia virus, IHD (GenBank: KJ125439)
Functional Activity by PCR Amplification¹	~ 1100 base pair amplicon	~ 1100 base pair amplicon (Figure 1)
Estimated Concentration by RiboGreen® Measurement (Viral, Cellular and Carrier)²	Report results	1.05 ng per 100 µL
Estimated Amount per Vial²	Report Results	1.05 ng
Genome Copy Number Using qPCR (Post vial)	Report results	1.5 × 10 ⁶ genome copies per mL
Virus Inactivation 10% of total yield inoculated on LLC-MK2 cells and evaluated for cytopathic effect ³	No viable virus detected	No viable virus detected

¹Amplified using iTaq™ Universal SYBR Green One-step Kit (Bio-Rad® 172-5151)

²Measurement is determined pre-vial prior to dilution due to the limit of detection of the quantification method

³Use of the QIAamp® Viral RNA Mini Kit has been demonstrated to consistently inactivate 100% of vaccinia virus as shown by the absence of cytopathic effect (CPE) after plating the entire extract on virus-susceptible cells.

Figure 1: Functional Activity of NR-2636 by PCR Amplification



Lane 1: Invitrogen™ TrackIt™ 1 Kb Plus DNA Ladder
Lane 2: PCR product from NR-2636

/Sonia Bjorum Brower/
Sonia Bjorum Brower

14 SEP 2022

Lead Technical Writer or designee, ATCC Federal Solutions

ATCC®, on behalf of BEI Resources, hereby represents and warrants that the material provided under this certificate has been subjected to the tests and procedures specified and that the results described, along with any other data provided in this certificate, are true and accurate to the best of ATCC®'s knowledge.

ATCC® is a trademark of the American Type Culture Collection.

You are authorized to use this product for research use only. It is not intended for human use.

