

**Genomic DNA from Monkeypox Virus, USA-2003**

**Catalog No. NR-4928**

**Product Description:**

Genomic DNA was isolated from a preparation of cell lysate and supernatant from MA-104 Clone 1 cells (ATCC® CRL-2378.1™) infected with monkeypox virus (MPXV), USA-2003 (BEI Resources lot 57935484) using a standard phenol-chloroform method. Lot 70053399 is a 1:10 dilution of lot 63310224.

**Lot: 70053399**

**Manufacturing Date: 02JUN2022<sup>1</sup>**

TEST	SPECIFICATIONS	RESULTS
<b>Genotypic Analysis</b> Sequencing of species-specific region (~ 860 nucleotides)	≥ 98% identity with MPXV, USA-2003 (GenBank: DQ011153; DQ011157) Consistent with source virus	100% identity with MPXV, USA-2003 (GenBank: DQ011153; DQ011157) Consistent with source virus
<b>Functional Activity by PCR Amplification<sup>2</sup></b>	~ 1100 base pair amplicon	~ 1100 base pair amplicon (Figure 1)
<b>Estimated Amount per Vial<sup>3</sup></b>	Report results	1.29 × 10 <sup>4</sup> copies per vial (50 µL)
<b>Virus Inactivation</b> 10% of total yield inoculated on MA-104 Clone 1 cells and evaluated for cytopathic effect after serial passage <sup>4</sup>	No viable virus detected	No viable virus detected

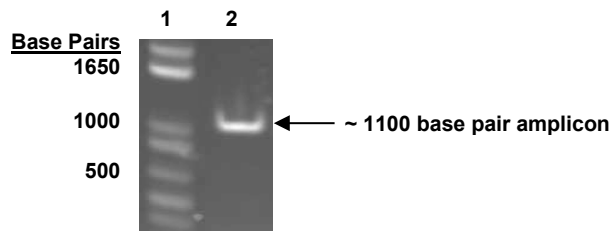
<sup>1</sup>Diluted and dispensed at BEI Resources

<sup>2</sup>Amplified using iTaq™ DNA Polymerase (Bio-Rad 170-8870) with 5 µL of NR-4928 in a 50 µL reaction

<sup>3</sup>Measurement is determined pre-vial prior to dilution due to the limit of detection of the quantification method

<sup>4</sup>Use of the standard extraction method has been demonstrated to consistently inactivate 100% of orthopox as shown by the absence of cytopathic effect (CPE) after plating the entire extract on virus-susceptible cells for two passages.

**Figure 1: Functional Activity of NR-4928 by PCR Amplification**



Lane 1: Invitrogen™ TrackIt™ 1 Kb Plus DNA Ladder

Lane 2: NR-4928

/Sonia Bjorum Brower/  
Sonia Bjorum Brower

07 JUN 2022

Lead Technical Writer or designee, ATCC Federal Solutions

ATCC®, on behalf of BEI Resources, hereby represents and warrants that the material provided under this certificate has been subjected to the tests and procedures specified and that the results described, along with any other data provided in this certificate, are true and accurate to the best of ATCC®'s knowledge.

ATCC® is a trademark of the American Type Culture Collection.

You are authorized to use this product for research use only. It is not intended for human use.

