

Genomic DNA from Vaccinia Virus, Western Reserve (Mouse Adapted)

Catalog No. NR-2640

Product Description:

Genomic DNA was isolated from a preparation of cell lysate and supernatant from African green monkey kidney epithelial cells (Vero; ATCC® CCL-81™) infected with vaccinia virus, Western Reserve (mouse adapted) (BEI Resources lot 3579606) using QIAamp® Viral RNA Mini Kit (Qiagen® 52906).

Lot: 70054717

Manufacturing Date: 03AUG2022

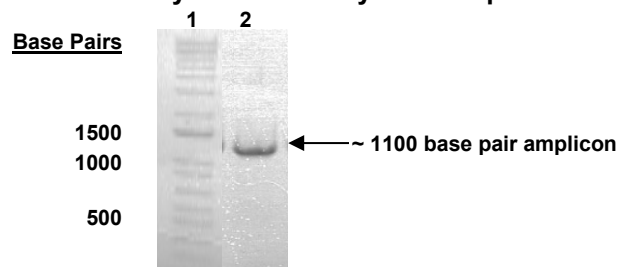
| TEST | SPECIFICATIONS | RESULTS |
|---|---|--|
| Genotypic Analysis Sequencing of species-specific region (~ 1000 nucleotides) | ≥ 98% identity with vaccinia virus, Western Reserve (GenBank: AY243312) | 100% identity with vaccinia virus, Western Reserve (GenBank: AY243312) |
| Functional Activity by PCR Amplification¹ | ~ 1100 base pair amplicon | ~ 1100 base pair amplicon (Figure 1) |
| Estimated Concentration by PicoGreen® Measurement (Viral and Cellular)² | Report results | 0.32 ng per 100 µL (0.0032 ng per µL) |
| Estimated Amount per Vial² | Report results | 0.32 ng |
| Genome Copy Number Using qPCR (Post-vial) | Report results | 1.26 × 10 ⁶ genome copies per mL |
| Virus Inactivation 10% of total yield inoculated on Vero cells and evaluated for cytopathic effect ³ | No viable virus detected | No viable virus detected |

¹Amplified using iTaq™ DNA Polymerase (Bio-Rad 170-8870) with 5 µL of NR-2640 in a 50 µL reaction

²Measurement is determined pre-vial prior to dilution due to the limit of detection of the quantification method

³Use of the QIAamp® Viral RNA Mini Kit has been demonstrated to consistently inactivate 100% of vaccinia virus as shown by the absence of cytopathic effect (CPE) after plating the entire extract on virus-susceptible cells.

Figure 1: Functional Activity of NR-2640 by PCR Amplification



Lane 1: Invitrogen™ TrackIt™ 1 Kb Plus DNA Ladder

Lane 2: PCR product from NR-2640

/Sonia Bjorun Brower/

Sonia Bjorun Brower

23 SEP 2022

Technical Manager or designee, ATCC Federal Solutions

ATCC®, on behalf of BEI Resources, hereby represents and warrants that the material provided under this certificate has been subjected to the tests and procedures specified and that the results described, along with any other data provided in this certificate, are true and accurate to the best of ATCC®'s knowledge.

ATCC® is a trademark of the American Type Culture Collection.

You are authorized to use this product for research use only. It is not intended for human use.

