

Genomic DNA from *Babesia microti*, Strain GI

Catalog No. NR-50774

Product Description:

Genomic DNA was extracted from *Babesia microti* (*B. microti*), strain GI, which was originally isolated from blood obtained from a human case of babesiosis in Nantucket, Massachusetts, USA, in 1983. NR-50774 was extracted from a preparation of BEI Resources NR-44070 lot 70040501 using proprietary technology and vialled in 10 mM Tris-HCl, 1 mM EDTA, pH 7.5.

Lot: 70048732

Manufacturing Date: 06JAN2022

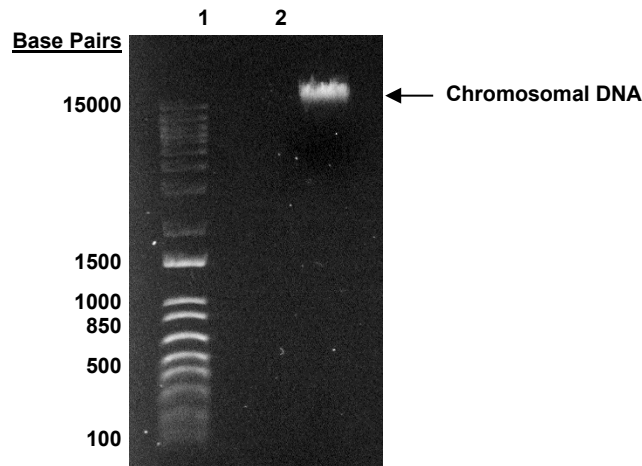
BEI Resources is committed to ensuring digital accessibility for people with disabilities. This Certificate of Analysis contains complex tables and may not be fully accessible. Please let us know if you encounter accessibility barriers and a fully accessible document will be provided: E-mail: Contact@BEIResources.org. We try to respond to feedback within 24 hours.

TEST	SPECIFICATIONS	RESULTS
Agarose Gel Electrophoresis	High molecular weight chromosomal DNA	High molecular weight chromosomal DNA (Figure 1)
Content by PicoGreen® Measurement	0.2 to 3.5 µg in 20 to 200 µL per vial	3 µg in 92 µL per vial (33 µg/mL)
Amount per Vial	0.2 to 3.5 µg	3 µg
Genotypic Analysis Sequencing of internal transcribed spacer (ITS) 1, 5.8S ribosomal RNA gene, ITS 2 (~ 760 base pairs)	≥ 99% sequence identity to <i>B. microti</i> , strain GI (GenBank: JGUY01000109.1)	100% sequence identity to <i>B. microti</i> , strain GI (GenBank: JGUY01000109.1)
PCR Assay of Extracted DNA¹ ITS 1, 5.8S ribosomal RNA gene, ITS 2	~ 930 base pair amplicon	~ 930 base pair amplicon
OD₂₆₀/OD₂₈₀ Ratio	1.7 to 2.1	1.8
Protozoan Inactivation 10% of total yield inoculated in medium ²	No viable organisms detected	No viable organisms detected

¹Primer sequences and conditions for PCR are available upon request.

²Incubated for 14 days at 37°C in an atmosphere of 93% N₂: 5% CO₂: 2% O₂ in Claycomb medium supplemented with 20% human serum type A positive, 1% HB 101® supplement (Irvine Scientific® T151), 2 mM L-glutamine, 200 µM hypoxanthine, 32 µM thymidine, 100 IU/mL penicillin, 100 µg/mL streptomycin, 0.25 µg/mL amphotericin B and 100 µg/mL gentamicin.

Figure 1: Agarose Gel Electrophoresis



Lane 1: Invitrogen™ TrackIt™ 1 Kb Plus DNA Ladder
 Lane 2: ~ 200 ng of NR-50774

/Sonia Bjorum Brower /
 Sonia Bjorum Brower

27 SEP 2022

Technical Manager or designee, ATCC Federal Solutions

ATCC®, on behalf of BEI Resources, hereby represents and warrants that the material provided under this certificate has been subjected to the tests and procedures specified and that the results described, along with any other data provided in this certificate, are true and accurate to the best of ATCC®'s knowledge.

ATCC® is a trademark of the American Type Culture Collection.

You are authorized to use this product for research use only. It is not intended for human use.

