

***Gardnerella vaginalis*, Strain JCP8017A**

Catalog No. HM-1110

Product Description: *Gardnerella vaginalis* (*G. vaginalis*), strain JCP8017A was isolated on March 23, 2011, from a clinical vaginal swab collected from a woman that tested positive for bacterial vaginosis (Nugent score = 8) at the Washington University School of Medicine in St. Louis, Missouri, USA.

Lot^{1,2}: 62082919

Manufacturing Date: 25OCT2013

TEST	SPECIFICATIONS	RESULTS
Phenotypic Analysis Cellular morphology Colony morphology ⁴ Motility (wet mount)	Report results ³ Report results Report results	Gram-variable rods Circular, convex, entire, smooth and gray (Figure 1) Non-motile
Genotypic Analysis Sequencing of 16S ribosomal RNA gene (~ 1380 base pairs)	≥ 99% identical to depositor's sequence	≥ 99% identical to depositor's sequence (GenBank: JX860313)
Viability (post-freeze)⁴	Growth	Growth

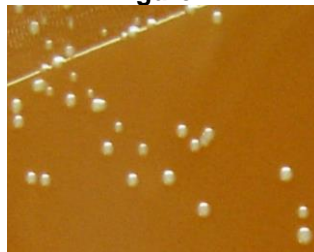
¹Quality control of HMP material is only performed to demonstrate that the material distributed by BEI Resources is identical to the deposited material. It should not be considered a complete characterization of the deposited organism.

²*G. vaginalis*, strain JCP8017A was deposited by Amanda Lewis, PhD, Assistant Professor of Molecular Microbiology, Department of Molecular Microbiology, Washington University School of Medicine, St. Louis, Missouri. HM-1110 was produced by inoculation of the deposited material into NYC III broth and incubated for 46 hours at 37°C in an anaerobic atmosphere (80% N₂:20% CO₂). The material from the initial growth was passaged once in NYC III broth for 50 hours at 37°C in an anaerobic atmosphere to produce this lot. Purity of this lot was assessed for 7 days under propagation conditions.

³*G. vaginalis* is often described as a Gram-variable organism but has a thin, Gram-positive cell wall [see Harper, J. J. and G. H. G. Davis. "Cell Wall Analysis of *Gardnerella vaginalis* (*Haemophilus vaginalis*).” *Int. J. Syst. Bacteriol.* 32 (1982): 48-50].

⁴48 hours at 37°C in an anaerobic atmosphere (80% N₂:20% CO₂) on Chocolate agar

Figure 1



Date: 26 FEB 2014

Signature:

Title:

Technical Manager, BEI Authentication or designee

ATCC®, on behalf of BEI Resources, hereby represents and warrants that the material provided under this certificate has been subjected to the tests and procedures specified and that the results described, along with any other data provided in this certificate, are true and accurate to the best of ATCC®'s knowledge.

ATCC® is a trademark of the American Type Culture Collection.

You are authorized to use this product for research use only. It is not intended for human use.

