

# Genomic DNA from Vaccinia Virus, New York City Board of Health (Wyeth, Calf adapted)

Catalog No. NR-2638

## Product Description:

Genomic DNA was isolated from a preparation of cell lysate and supernatant from *Cercopithecus aethiops* kidney epithelial cells (Vero; ATCC® CCL-81™) infected with vaccinia virus, NYCBOH (BEI Resources lot 60305766) using QIAamp® Viral RNA Mini Kit (Qiagen® 52906).

Lot: 70056992

Manufacturing Date: 18JUL2022

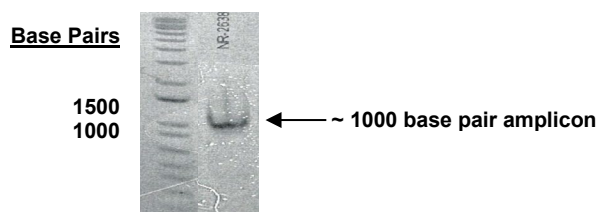
TEST	SPECIFICATIONS	RESULTS
<b>Genotypic Analysis</b> Sequencing of species-specific region (~ 520 nucleotides)	≥ 98% identity with vaccinia virus, Dryvax® clone DPP15 (GenBank: JN654981)	99.6% identity with vaccinia virus, Dryvax® clone DPP15 (GenBank: JN654981)
<b>Functional Activity by PCR Amplification<sup>1</sup></b>	~ 1000 base pair amplicon	~ 1000 base pair amplicon (Figure 1)
<b>Estimated Concentration by PicoGreen® Measurement (Viral and Cellular)<sup>2</sup></b>	Report results	1.7 ng per 100 µL
<b>Estimated Amount per Vial<sup>2</sup></b>	Report results	1.7 ng
<b>Genome Copy Number Using qPCR (Post-vial)</b>	Report results	4.64 × 10 <sup>6</sup> genome copies per mL
<b>Virus Inactivation</b> 10% of total yield inoculated on Vero cells and evaluated for cytopathic effect <sup>3</sup>	No viable virus detected	No viable virus detected

<sup>1</sup>Amplified using iTaq™ DNA Polymerase (BioRad 170-8870) with 5 µL of NR-2638 in a 50 µL reaction

<sup>2</sup>Measurement is determined pre-vial prior to dilution due to the limit of detection of the quantification method

<sup>3</sup>Use of the QIAamp® Viral RNA Mini Kit has been demonstrated to consistently inactivate 100% of vaccinia virus as shown by the absence of cytopathic effect (CPE) after plating the entire extract on virus-susceptible cells.

**Figure 1: Functional Activity of NR-2638 by PCR Amplification**



Lane 1: Invitrogen™ TrackIt™ 1 Kb Plus DNA Ladder

Lane 2: PCR product from NR-2638

/Sonia Bjorum Brower/

Sonia Bjorum Brower

07 OCT 2022

Technical Manager or designee, ATCC Federal Solutions

ATCC®, on behalf of BEI Resources, hereby represents and warrants that the material provided under this certificate has been subjected to the tests and procedures specified and that the results described, along with any other data provided in this certificate, are true and accurate to the best of ATCC®'s knowledge.

ATCC® is a trademark of the American Type Culture Collection.

You are authorized to use this product for research use only. It is not intended for human use.

