

***Rothia mucilaginosa*, Strain CC87LB**

**Catalog No. HM-1055**

**Product Description:**

*Rothia mucilaginosa* (*R. mucilaginosa*), strain CC87LB was isolated in October 2010 from colonic biopsy tissue of a human subject in Victoria, British Columbia, Canada. HM-1055 lot 70052112 was produced by inoculation of BEI Resources seed lot 63622028 into Brain Heart Infusion broth and incubated for 1 day at 37°C in an aerobic atmosphere. The material from the initial growth was inoculated into the Tryptic Soy agar kolles with 5% defibrinated sheep blood for 1 day at 37°C in an aerobic atmosphere to produce this lot. Quality control testing was completed under propagation conditions unless otherwise noted.

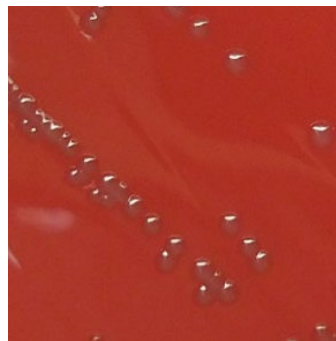
Note: Quality control of HMP material is only performed to demonstrate that the material distributed by BEI Resources is identical to the deposited material. It should not be considered a complete characterization of the deposited organism.

**Lot: 70052112**

**Manufacturing Date: 11MAY2022**

TEST	SPECIFICATIONS	RESULTS
<b>Phenotypic Analysis</b> Cellular morphology Colony morphology  Motility (wet mount)	Gram-positive coccobacilli Report results  Report results	Gram-positive coccobacilli Circular, convex, entire, smooth and cream (Figure 1)  Non-motile
<b>Genotypic Analysis</b> Sequencing of 16S ribosomal RNA gene (~ 670 base pairs)	≥ 99% sequence identity to depositor's sequence	100% sequence identity to depositor's sequence
<b>Purity (post-freeze)</b> 7 days at 37°C in an aerobic atmosphere with and without 5% CO <sub>2</sub> on Tryptic Soy agar with 5% defibrinated sheep blood	Growth consistent with expected colony morphology	Growth consistent with expected colony morphology
<b>Viability (post-freeze)</b>	Growth	Growth

**Figure 1: Colony Morphology**



/Sonia Bjorum Brower/

Sonia Bjorum Brower

12 AUG 2022

Technical Manager or designee, ATCC Federal Solutions

ATCC®, on behalf of BEI Resources, hereby represents and warrants that the material provided under this certificate has been subjected to the tests and procedures specified and that the results described, along with any other data provided in this certificate, are true and accurate to the best of ATCC®'s knowledge.

ATCC® is a trademark of the American Type Culture Collection.

You are authorized to use this product for research use only. It is not intended for human use.

