

# Genomic DNA from Cowpox Virus, Brighton Red

Catalog No. NR-2641

## Product Description:

Genomic DNA was extracted from a preparation of cell lysate and supernatant from African green monkey kidney cells (ATCC® CCL-26™) infected with cowpox virus (CPXV), Brighton Red (BEI Resources lot 3694113) using QIAamp® Viral RNA Mini Kit (Qiagen® 52906).

Lot: 70055230

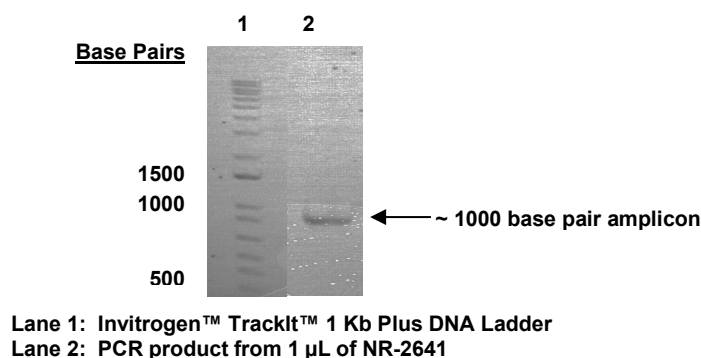
Manufacturing Date: 30AUG2022

TEST	SPECIFICATIONS	RESULTS
<b>Genotypic Analysis</b> Sequencing of species-specific region (~ 900 nucleotides)	≥ 98% identity with CPXV, Brighton Red (GenBank: AF482875)	99.9% identity with CPXV, Brighton Red (GenBank: AF482875)
<b>Functional Activity by PCR Amplification<sup>1</sup></b> B9R gene	~ 1000 base pair amplicon	~ 1000 base pair amplicon (Figure 1)
<b>Estimated Concentration by Qubit Measurement</b>	Report results	0.67 ng per 100 µL (0.006 µg per mL)
<b>Estimated Amount per Vial<sup>2</sup></b>	Report results	0.67 ng
<b>Genome Copy Number Using BioRad QX200 Droplet Digital PCR (ddPCR™) System</b> (Post vial; 9 replicates)	Report results	1.2 × 10 <sup>6</sup> genome copies per mL
<b>Virus Inactivation</b> 10% of total yield inoculated on BS-C-1 cells and evaluated for cytopathic effect <sup>3</sup>	No viable virus detected	No viable virus detected

<sup>1</sup>Amplified using iTaq™ Universal SYBR Green One-step Kit (Bio-Rad® 172-5151) with 5 µL of NR-2641 in a 50 µL reaction

<sup>2</sup>Use of the QIAamp® Viral RNA Mini Kit has been demonstrated to consistently inactivate 100% of orthopoxviruses as shown by the absence of cytopathic effect (CPE) after plating the entire extract on virus-susceptible cells for two passages.

Figure 1: Functional Activity of NR-2641 by PCR Amplification



/Sonia Bjorum Brower/

Sonia Bjorum Brower

14 OCT 2022

Technical Manager or designee, ATCC Federal Solutions

ATCC®, on behalf of BEI Resources, hereby represents and warrants that the material provided under this certificate has been subjected to the tests and procedures specified and that the results described, along with any other data provided in this certificate, are true and accurate to the best of ATCC®'s knowledge.

ATCC® is a trademark of the American Type Culture Collection.

You are authorized to use this product for research use only. It is not intended for human use.

