

***Streptococcus agalactiae*, Strain MNZ933**

Catalog No. NR-43896

Product Description:

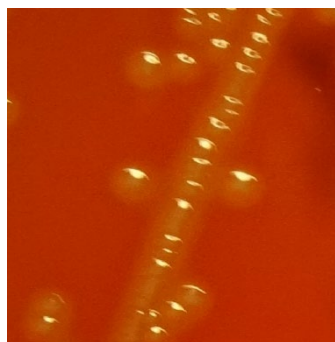
The antibiotic-resistant variant *Streptococcus agalactiae* (*S. agalactiae*), MNZ933 was isolated from human blood. NR-43896 lot 70049549 was produced by the inoculation of deposited material into Todd-Hewitt broth containing 0.5% (w/v) yeast extract, which was grown for 1 day at 37°C in an aerobic atmosphere with 5% CO₂. Broth inoculum was added to Tryptic Soy agar with 5% defibrinated sheep blood kolles, which were grown for 1 day at 37°C in an aerobic atmosphere with 5% CO₂ to produce this lot. Quality control testing was completed under propagation conditions unless otherwise noted.

Lot: 70049549

Manufacturing Date: 12JAN2022

TEST	SPECIFICATIONS	RESULTS
Phenotypic Analysis Cellular morphology Colony morphology Hemolysis Serogroup Motility (wet mount) Biochemical characterization Catalase VITEK® MS (MALDI-TOF)	Gram-positive cocci Report results Report results Group B Report results Report results <i>S. agalactiae</i>	Gram-positive cocci Circular, convex, entire, smooth, translucent and gray (Figure 1) β-hemolytic Group B Non-motile Negative <i>S. agalactiae</i> (99.9%)
Genotypic Analysis Sequencing of 16S ribosomal RNA gene (~ 1490 base pairs)	≥ 99% sequence identity to <i>S. agalactiae</i> type strain (GenBank: UAVB00000000.1)	100% sequence identity to <i>S. agalactiae</i> type strain (GenBank: UAVB01000001.1)
Purity (post-freeze) 7 days at 37°C in an aerobic atmosphere with 5% CO ₂ on Tryptic Soy agar with 5% defibrinated sheep blood	Growth consistent with expected colony morphology	Growth consistent with expected colony morphology
Viability (post-freeze)	Growth	Growth

Figure 1: Colony Morphology



/Heather Couch/

Heather Couch

24 FEB 2022

Program Manager or designee, ATCC Federal Solutions

ATCC[®], on behalf of BEI Resources, hereby represents and warrants that the material provided under this certificate has been subjected by ATCC[®] to the tests and procedures specified and that the results described, along with any other data provided in this certificate, are true and accurate to the best of ATCC[®]'s knowledge.

ATCC[®] is a trademark of the American Type Culture Collection.

You are authorized to use this product for research use only. It is not intended for human use.

