

***Homo sapiens* Embryonic Kidney Epithelial Cells Expressing Transmembrane Protease, Serine 2 and Human Angiotensin-Converting Enzyme 2 [293T-ACE2.TMPRSS2 (mCherry)]**

Catalog No. NR-55293

Product Description:

NR-55293 [293T-ACE2.TMPRSS2 (mCherry)] contains a preparation of *Homo sapiens* embryonic kidney epithelial cells (HEK-293T) which were modified to express the transmembrane protease, serine 2 (TMPRSS2) and angiotensin-converting enzyme 2 (ACE2).

Lot: 70055229

Manufacturing Date: 07SEP2022

TEST	SPECIFICATIONS	RESULTS
Morphology	Epithelial-like	Epithelial-like
Confirmation of ACE2 Expression by Indirect Fluorescent Antibody Assay ¹	Fluorescence observed	Fluorescence observed (Figure 1)
Confirmation of TMPRSS2 Expression by Indirect Fluorescent Antibody Assay ²	Fluorescence observed	Fluorescence observed (Figure 2)
Multiplex PCR Amplification of Cytochrome C Oxidase I (COI) Gene	Human origin No evidence of another species	Human origin No evidence of another species
Total Cell Count	> 1.0 × 10 ⁶ cells per vial	6.2 × 10 ⁶ cells per vial
Post-Freeze Viability	≥ 50%	76.6%
Sterility (21-day incubation) Harpo's HTYE broth, 37°C and 26°C, aerobic ³ Trypticase Soy broth, 37°C and 26°C, aerobic Sabouraud broth, 37°C and 26°C, aerobic Sheep blood agar, 37°C, aerobic Sheep blood agar, 37°C, anaerobic Thioglycollate broth, 37°C, anaerobic DMEM with 10% FBS, 37°C and 5% CO ₂	No growth No growth No growth No growth No growth No growth No growth	No growth No growth No growth No growth No growth No growth No growth
Mycoplasma Contamination Hoechst DNA stain Agar and broth culture (14-day incubation at 37°C) DNA detection by PCR of extracted Test Article nucleic acid	None detected None detected None detected	None detected None detected None detected

¹Testing performed with anti-ACE2 antibody (ProteinTech cat no. 66699-1-1g)

²Testing performed with anti-TMPRSS2 antibody (Millipore cat no. MABF2158)

³Atlas, Ronald M. *Handbook of Microbiological Media*. 3rd ed. Ed. Lawrence C. Parks. Boca Raton: CRC Press, 2004, p. 798.

Figure 1: ACE2 Expression

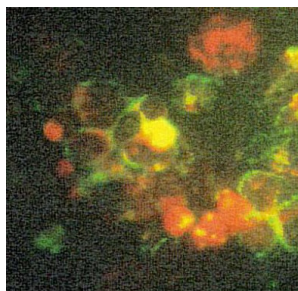
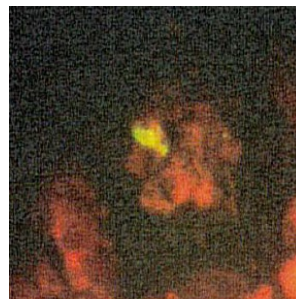


Figure 2: TMPRSS2 Expression



/Sonia Bjorum Brower/
Sonia Bjorum Brower
Technical Manager, ATCC Federal Solutions

21 DEC 2022

ATCC®, on behalf of BEI Resources, hereby represents and warrants that the material provided under this certificate has been subjected to the tests and procedures specified and that the results described, along with any other data provided in this certificate, are true and accurate to the best of ATCC®'s knowledge.

ATCC® is a trademark of the American Type Culture Collection.
You are authorized to use this product for research use only. It is not intended for human use.

