

**GroES (Gene Rv3418c), Purified Native Protein from *Mycobacterium tuberculosis*, Strain H37Rv****Catalog No. NR-14861**

This reagent is the tangible property of the U.S. Government.

**Product Description:**

NR-14861 is a preparation of the GroES (Gene Rv3418c) purified native proteins from the culture filtrate of *Mycobacterium tuberculosis*, strain H37Rv. A supernatant from a 40% saturated ammonium sulfate precipitation of culture filtrate proteins were precipitated with 70% saturated ammonium sulfate. The pellet was suspended and dialyzed. The material that did not bind to the concanavalin A column was resolved by reversed phase HPLC and the fractions containing GroES homologue were pooled and lyophilized.

**Lot: 70053428****Manufacturing Date: 14SEP2022**

Production and QC testing were performed by Colorado State University (CSU). The CSU production documentation for lot 22.Rv.8.4.GroES is attached.

ATCC®, on behalf of BEI Resources, hereby represents and warrants that the material provided under this certificate has been subjected by the contractor to the tests and procedures specified and that the results described, along with any other data provided in this certificate, are true and accurate to the best of ATCC®'s knowledge.

ATCC® is a trademark of the American Type Culture Collection.

You are authorized to use this product for research use only. It is not intended for human use.



## WORK SHEET FOR PURIFIED NATIVE PROTEINS

### General Information

BEI Catalog Number: NR-14861  
Product Description: GroES Protein (Rv3418c)  
CSU Lot Number: 22.Rv.8.4.GroES  
Species: *Mycobacterium tuberculosis*  
Strain: H37Rv

### Purification Information

Starting material: 21.Rv.2.10.5.9.CFP, 21.Rv.2.7.27.10.CFP Pooled 595 mg total  
Starting material (select one):  
 CFP: Filter Sterilized Yes  
 Cells: Irradiated N/A  
Viability Test Performed: N/A  
Protocol used (SOP #'s): PP035.5  
Date started: 8.24.2022  
Date completed: 9.14.2022  
Notebook; page(s): KB BEI#1 pgs 65-70

### Quality Control Information

Clarity of product/suspension after dialysis: Clear  
BCA: 0.72  $\mu\text{g}/\mu\text{l}$  Notebook and page(s): KB BEI#1 pg 81  
Total Protein: 5.1 mg  
Simply Blue Date: 9.14.22 Notebook and page(s): KB BEI#1 pg 82  
Western blot Date: 9.14.22 Antibody used:  $\alpha\text{SA-12}$ ,  $\alpha\text{Mpt64}$   
Notebook and page(s): KB BEI#1 pg 82  
Mass Spectrometry information/file (if applicable): N/A

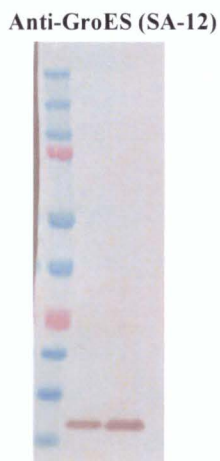
### QC Gels:

Simply Blue Stain:

Western: 1  $\mu\text{g}$  and 2  $\mu\text{g}$  protein load w/ CFP control



1  $\mu\text{g}$  / 2  $\mu\text{g}$



1  $\mu\text{g}$  / 2  $\mu\text{g}$



2  $\mu\text{g}$  CFP / 1  $\mu\text{g}$  / 2  $\mu\text{g}$

Aliquot information: 10 vials at 0.5 mg per vial, 0.1 mg aliquot kept in-house

  
(Research Associate) 9/16/22 (date)

  
(Laboratory Supervisor) 9/16/22 (date)