

**Ag85 Complex, Purified Native Protein from *Mycobacterium tuberculosis*, Strain H37Rv**
**Catalog No. NR-14855**

This reagent is the tangible property of the U.S. Government.

**Product Description:**

NR-14855 is a preparation of antigen 85 (Ag85) complex purified from the culture filtrate proteins of *Mycobacterium tuberculosis* (*M. tuberculosis*), strain H37Rv.

**Lot: 70045514**
**Manufacturing Date: 20SEP2021**

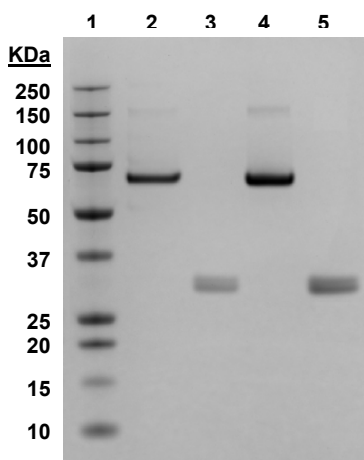
Production and QC testing were performed by Colorado State University (CSU). The CSU documentation for lot 21.Rv.2.9.20.Ag85 is attached.

TEST	SPECIFICATIONS	RESULTS
SDS-PAGE and Silver Stain <sup>1</sup>	Report results	A doublet visible at approximately 30 KDa (Figure 1)
Concentration by Bicinchoninic Acid Protein Assay <sup>1</sup>	Report results	4.67 µg per µL
Western Blot Analysis <sup>1,2</sup> Monoclonal anti-Ag85 complex <sup>3</sup>	Reactive	Reactive (Figure 2)

<sup>1</sup>Retesting of NR-14855 lot 70045514 was performed by BEI Resources in September 2022 to confirm product stability.

<sup>2</sup>Using bovine serum albumin (BSA) as a standard

<sup>3</sup>Monoclonal anti-*M. tuberculosis* Ag85 Complex (FbpA/FbpB/FbpC; Genes Rv3804c, Rv1886c, Rv0129c), Clone IT-44 (HBT7) (BEI Resources NR-50572) (1:1000 dilution)

**Figure 1: SDS-PAGE and Silver Stain**


Lane 1: Precision Plus Protein™ Standard (Bio-Rad 1610373)

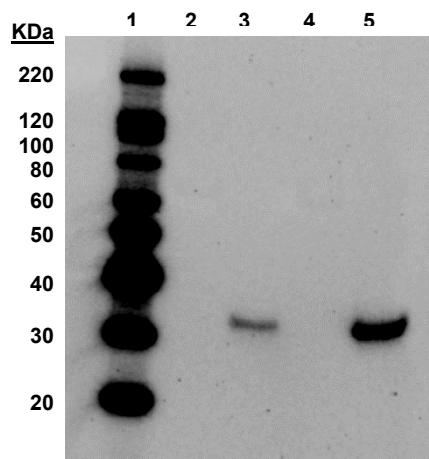
Lane 2: BSA, 1 µg

Lane 3: NR-14855 lot 70045514, 1 µg

Lane 4: BSA, 2 µg

Lane 5: NR-14855 lot 70045514, 2 µg

Figure 2: Western Blot



Lane 1: MagicMark™ XP Protein Standard  
(Invitrogen® LC5602)

Lane 2: BSA, 1 µg

Lane 3: NR-14855 lot 70045514, 1 µg

Lane 4: BSA, 2 µg

Lane 5: NR-14855 lot 70045514, 2 µg

/Sonia Bjorum Brower/

Sonia Bjorum Brower

Technical Manager or designee, ATCC Federal Solutions

17 NOV 2022

ATCC®, on behalf of BEI Resources, hereby represents and warrants that the material provided under this certificate has been subjected to the tests and procedures specified and that the results described, along with any other data provided in this certificate, are true and accurate to the best of ATCC®'s knowledge.

ATCC® is a trademark of the American Type Culture Collection.

You are authorized to use this product for research use only. It is not intended for human use.



## General Information

### Purification Information

### Quality Control Information

**QC Gel and Blot:**



C. McHaffey  
(Laboratory Supervisor)

9/27/12  
(date)