

***Peptostreptococcus* sp., Strain CC14N (Deposited as *Peptostreptococcus anaerobius*, Strain CC14N)**

**Catalog No. HM-1051**

**Product Description:**

*Peptostreptococcus* sp., strain CC14N was isolated in October 2010 from colonic biopsy tissue of a human subject in Victoria, British Columbia, Canada. **HM-1051 was deposited as *Peptostreptococcus anaerobius*, however the depositor's 16S ribosomal RNA gene sequence and the 16S ribosomal RNA gene sequence obtained from HM-1051 align more favorably with *Peptostreptococcus russelli*.** HM-1051 lot 70056132 was produced by the inoculation of BEI Resources seed lot 63325997 into Modified Reinforced Clostridial broth and incubated for 3 days at 37°C in an anaerobic atmosphere (< 5% O<sub>2</sub>; Remel™ Pack-Anaero™). Broth inoculum was added to Tryptic Soy agar with 5% defibrinated sheep blood kolles, which were grown for 3 days at 37°C in an anaerobic atmosphere to produce this lot. Quality control testing was completed under propagation conditions unless otherwise noted.

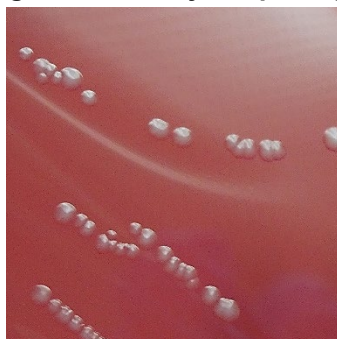
Note: Quality control of HMP material is only performed to demonstrate that the material distributed by BEI Resources is identical to the deposited material. It should not be considered a complete characterization of the deposited organism.

**Lot: 70056132**

**Manufacturing Date: 13OCT2022**

TEST	SPECIFICATIONS	RESULTS
<b>Phenotypic Analysis</b> Cellular morphology Colony morphology  Motility (wet mount)	Gram-positive cocci Report results  Report results	Gram-positive cocci Circular, convex, entire, smooth and gray (Figure 1)  Non-motile
<b>Genotypic Analysis</b> Sequencing of 16S ribosomal RNA gene (~ 1460 base pairs)	≥ 99% sequence identity to depositor's sequence Consistent with <i>Peptostreptococcus</i> sp.	99.9% sequence identity to depositor's sequence Consistent with <i>Peptostreptococcus</i> sp.
<b>Purity (post-freeze)</b> Anaerobic 8 days at 37°C on Tryptic Soy agar with 5% defibrinated sheep blood  Aerobic with 5% CO <sub>2</sub> 8 days at 37°C on Tryptic Soy agar with 5% defibrinated sheep blood	Consistent with expected colony morphology  No growth	Consistent with expected colony morphology  No growth
<b>Viability (post-freeze)</b>	Growth	Growth

**Figure 1: Colony Morphology**



/Sonia Bjorum Brower/

Sonia Bjorum Brower

03 JAN 2023

Technical Manager or designee, ATCC Federal Solutions

ATCC®, on behalf of BEI Resources, hereby represents and warrants that the material provided under this certificate has been subjected to the tests and procedures specified and that the results described, along with any other data provided in this certificate, are true and accurate to the best of ATCC®'s knowledge.

ATCC® is a trademark of the American Type Culture Collection.

You are authorized to use this product for research use only. It is not intended for human use.

