

***Klebsiella oxytoca*, Strain MIT 10-5243**

**Catalog No. HM-624**

**Product Description:**

*Klebsiella oxytoca* (*K. oxytoca*) strain MIT 10-5243 was isolated from human blood in Kansas, USA. HM-624 was produced by inoculation of BEI Resources seed lot 59920858 into Tryptic Soy broth and incubated for 1 day at 37°C in an aerobic atmosphere. Broth inoculum was added to Tryptic Soy agar kolles, which were grown for 1 day at 37°C in an aerobic atmosphere to produce this lot. Quality control testing was completed under propagation conditions unless otherwise noted.

Note: Quality control of HMP material is only performed to demonstrate that the material distributed by BEI Resources is identical to the deposited material. It should not be considered a complete characterization of the deposited organism.

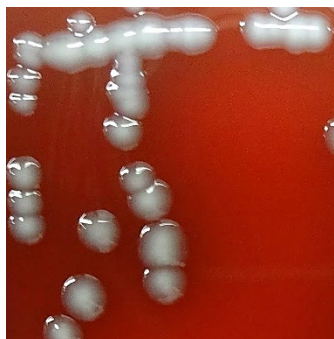
**Lot: 70057434**

**Manufacturing Date: 16DEC2022**

TEST	SPECIFICATIONS	RESULTS
<b>Phenotypic Analysis</b> Cellular morphology Colony morphology  Motility (wet mount)	Gram-negative rods Report results  Report results	Gram-negative rods Circular, convex, entire, smooth and cream (Figure 1) Non-motile
<b>Genotypic Analysis</b> Sequencing of 16S ribosomal RNA gene (~ 1470 base pairs)	≥ 99% sequence identity to <i>K. oxytoca</i> , strain MIT 10-5243 (GenBank: AGDJ01000037.1)	99.7% sequence identity to <i>K. oxytoca</i> , strain MIT 10-5243 (GenBank: AGDJ01000037.1) <sup>1</sup>
<b>Purity (post-freeze)</b> 7 days at 37°C in an aerobic atmosphere with 5% CO <sub>2</sub> on Tryptic Soy agar with 5% defibrinated sheep blood	Growth consistent with expected colony morphology	Growth consistent with expected colony morphology
<b>Viability (post-freeze)</b>	Growth	Growth

<sup>1</sup>Also consistent with other *Klebsiella* species.

**Figure 1: Colony Morphology**



/Sonia Bjorum Brower/

Sonia Bjorum Brower

03 FEB 2023

Technical Manager or designee, ATCC Federal Solutions

ATCC®, on behalf of BEI Resources, hereby represents and warrants that the material provided under this certificate has been subjected to the tests and procedures specified and that the results described, along with any other data provided in this certificate, are true and accurate to the best of ATCC®'s knowledge.

ATCC® is a trademark of the American Type Culture Collection.

You are authorized to use this product for research use only. It is not intended for human use.

