

Candida tropicalis, Strain CAB54-6763-3

Catalog No. HM-1124

Product Description:

Candida tropicalis (*C. tropicalis*), strain CAB54-6763-3 was isolated in February 2012 from human blood in St. Louis, Missouri, USA. HM-1124 was produced by inoculation of the BEI Resources seed lot onto Emmons Modified Sabouraud Dextrose agar and incubated for 3 days at 25°C in an aerobic atmosphere to produce this lot. Yeast were harvested from agar plates with 20% glycerol prior to vialing. Quality control testing was completed under propagation conditions unless otherwise noted.

Note: Quality control of HMP material is only performed to demonstrate that the material distributed by BEI Resources is identical to the deposited material. It should not be considered a complete characterization of the deposited organism.

Lot: 70048134

Manufacturing Date: 22NOV2021

TEST	SPECIFICATIONS	RESULTS
Phenotypic Analysis Cellular morphology Colony morphology VITEK® 2 (YST card) VITEK® MS (MALDI-TOF)	Report results Report results <i>C. tropicalis</i> (≥ 85%) <i>C. tropicalis</i>	Globose to subglobose with some clumping; no pseudohyphae observed (Figure 1) Butyrous and cream (Figure 2) <i>C. tropicalis</i> (98% probability) <i>C. tropicalis</i> (99.9%)
Genotypic Analysis Partial sequencing of 28S ribosomal RNA gene (~ 590 base pairs)	≥ 99% sequence identity to <i>C. tropicalis</i> type strain (GenBank: KT380847.1)	100% sequence identity to <i>C. tropicalis</i> type strain (GenBank: KT380847.1) ¹
Purity (post-freeze) 3 days at 25°C in an aerobic atmosphere in Nutrient broth with 0.1% Yeast Extract 3 days at 37°C in an aerobic atmosphere in Nutrient broth with 0.1% Yeast Extract	No bacterial growth No bacterial growth	No bacterial growth No bacterial growth
Viability (post-freeze) 3 days at 25°C in an aerobic atmosphere on Emmons Modified Sabouraud Dextrose agar	Growth	Growth

¹Also consistent with other *Candida* species

Figure 1: Cellular Morphology

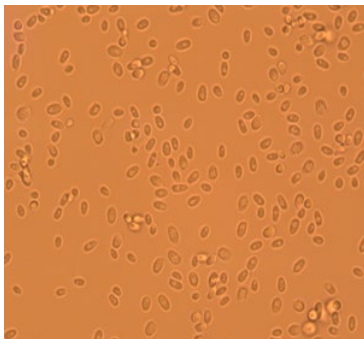
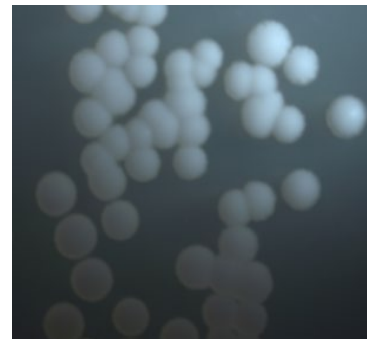


Figure 2: Colony Morphology



/Sonia Bjorum Brower/

Sonia Bjorum Brower

30 JAN 2023

Technical Manager or designee, ATCC Federal Solutions

ATCC®, on behalf of BEI Resources, hereby represents and warrants that the material provided under this certificate has been subjected to the tests and procedures specified and that the results described, along with any other data provided in this certificate, are true and accurate to the best of ATCC®'s knowledge.

ATCC® is a trademark of the American Type Culture Collection.

You are authorized to use this product for research use only. It is not intended for human use.

