

Genomic RNA from Hepatitis A Virus, HM175/18f

Catalog No. NR-28909

Product Description:

Genomic RNA was isolated from a preparation of cell lysate and supernatant from *Macaca mulatta* kidney cells (FRhK-4; ATCC® CRL-1688™) infected with hepatitis A virus, HM175/18f (BEI Resources lot 70027139) using QIAamp® Viral RNA Mini Kit (Qiagen® 52906). The viral genomic RNA is in a background of cellular nucleic acid and carrier RNA.

Lot: 70055161

Manufacturing Date: 02SEP2022

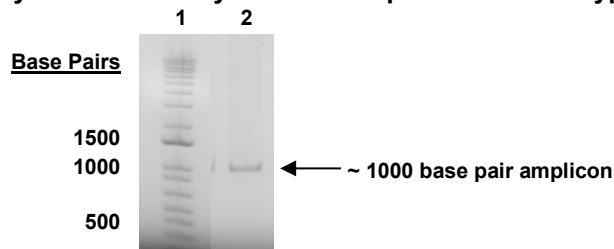
TEST	SPECIFICATIONS	RESULTS
Genotypic Analysis Sequencing of species-specific region (~ 850 nucleotides)	≥ 98% identity with hepatitis A virus, isolate 18f (GenBank: KP879216)	99.1% identity with hepatitis A virus, isolate 18f (GenBank: KP879216)
Functional Activity by RT-PCR Amplification¹ (Polyprotein gene)	~ 1000 base pair amplicon	~ 1000 base pair amplicon (Figure 1)
Estimated Concentration (post-dilution) by Qubit® Measurement (Viral, Cellular and Carrier)²	Report results	18.0 ng per 100 µL (0.18 µg/mL)
Estimated Amount per Vial²	Report results	18.0 ng
Virus Inactivation 10% of total yield inoculated on FRhK-4 cells and evaluated for cytopathic effect after serial passage ³	No viable virus detected	No viable virus detected

¹Amplified using iTaq™ Universal SYBR Green One-step Kit (Bio-Rad® 172-5151) with 5 µL of NR-28909 in a 50 µL reaction

²Measurement is determined pre-vial prior to dilution due to the limit of detection of the quantification method

³Use of the QIAamp® Viral RNA Mini Kit has been demonstrated to consistently inactivate 100% of HepAV as shown by the absence of cytopathic effect (CPE) after plating the entire extract on virus-susceptible cells for two passages.

Figure 1: Functional Activity of NR-28909 by RT-PCR Amplification of Polyprotein Gene



Lane 1: Invitrogen™ TrackIt™ 1 Kb Plus DNA Ladder

Lane 2: PCR product from 1 µL of NR-28909

/Sonia Bjorum Brower/

Sonia Bjorum Brower

Technical Manager or designee, ATCC Federal Solutions

22 FEB 2023

ATCC®, on behalf of BEI Resources, hereby represents and warrants that the material provided under this certificate has been subjected to the tests and procedures specified and that the results described, along with any other data provided in this certificate, are true and accurate to the best of ATCC®'s knowledge.

ATCC® is a trademark of the American Type Culture Collection.

You are authorized to use this product for research use only. It is not intended for human use.

