



Certificate of Analysis for HRP-20206

Monoclonal Anti-Human Dipeptidyl peptidase-4 (DPP-4), Clone EPR18215 (produced *in vitro*)

Catalog No. HRP-20206

Product Description:

Abcam Catalog No. ab187048 (Lot GR3272512)

Antibody Class: IgG

Rabbit monoclonal antibody prepared against the synthetic peptide within human DPP4. Clone EPR18215 was purified by protein A affinity chromatography.

Lot: 70055706

Receipt Date: 30NOV2022

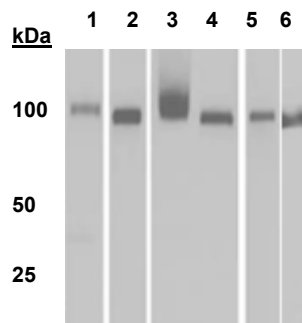
TEST	SPECIFICATIONS	RESULTS
Antibody Class Determination	IgG	IgG
Concentration	Report results	0.155 mg per mL
Amount per Vial	Report results	155 µg (100 µl)
Functional Activity Western blot analysis ¹ Immunohistochemical analysis (Paraffin-embedded) ² Immunohistochemical analysis (Frozen) ³	Reactive Reactive Reactive	Reactive (Figure 1) Reactive (Figure 2) Reactive (Figure 3)

¹Using HRP-20206 at 1:1000 dilution, with goat anti-rabbit IgG at 1:100,000 dilution as the secondary antibody

²Using HRP-20206 at 1:2000 dilution as primary antibody, and HRP-conjugated goat anti-Rabbit IgG as the secondary antibody. Counter stained with hematoxylin.

³Using HRP-20206 at 1:1000 dilution as primary antibody, and 1:1000 dilution of HRP-conjugated goat anti-Rabbit IgG (Alexa Fluor® 488, Abcam ab150077) as the secondary antibody. Counter stained with DAPI.

Figure 1: Western Blot Analysis



Lane 1: Mouse lung lysate
Lane 2: Rat lung lysate
Lane 3: Mouse thymus lysate
Lane 4: Rat thymus lysate
Lane 5: Rat liver lysate
Lane 6: Rat kidney lysate

Figure 2: Immunohistochemical Analysis (Paraffin embedded)

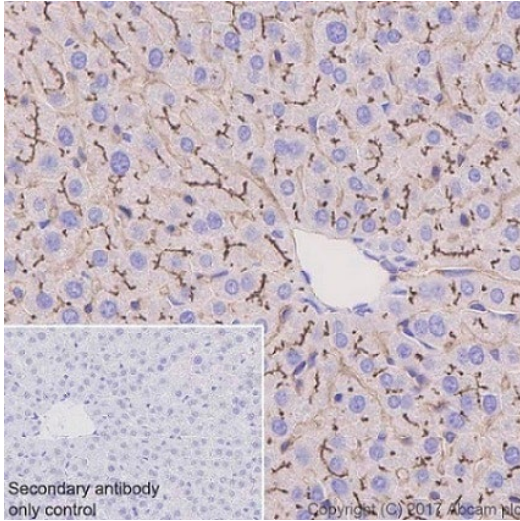
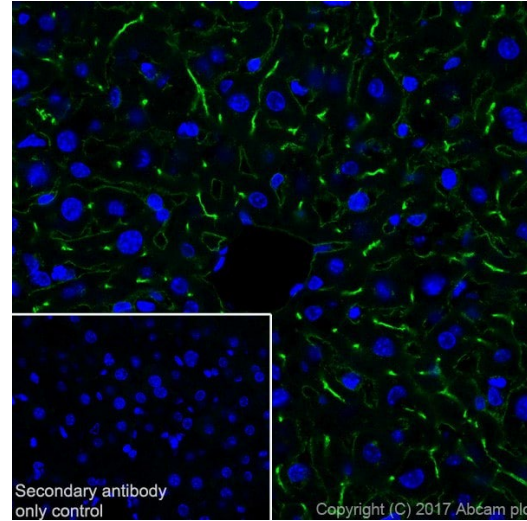


Figure 3: Immunohistochemical Analysis (Frozen)



/Ken Crawford/
Ken Crawford
Lead Technical Writer, ATCC Federal Solutions

21 FEB 2023

ATCC®, on behalf of the NIH HIV Reagent Program, hereby represents and warrants that the material provided under this certificate has been subjected by the manufacturer to the tests and procedures specified and that the results described, along with any other data provided in this certificate, are true and accurate to the best of ATCC®'s knowledge.

*ATCC® is a trademark of the American Type Culture Collection.
You are authorized to use this product for research use only. It is not intended for human use.*

