

Enterococcus faecalis EnGen0237, Strain SF24397

Catalog No. NR-31970

Product Description:

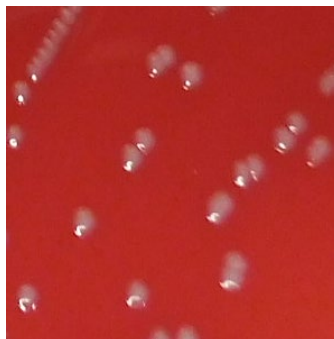
Enterococcus faecalis EnGen0237 (*E. faecalis*), strain SF24397 was isolated in 2001 from a urine sample in Michigan, USA. NR-31970 was produced by inoculation of BEI Resources seed lot 61926208 into Tryptic Soy broth and incubated for 1 day at 37°C in an aerobic atmosphere. Broth inoculum was added to Tryptic Soy agar with 5% defibrinated sheep blood kolles, which were grown for 1 day at 37°C in an aerobic atmosphere to produce this lot. Quality control testing was completed under propagation conditions unless otherwise noted.

Lot: 70056668

Manufacturing Date: 07DEC2022

TEST	SPECIFICATIONS	RESULTS
Phenotypic Analysis Cellular morphology Colony morphology Motility (wet mount) Hemolysis VITEK® MS (MALDI-TOF)	Gram-positive cocci Report results Report results α-hemolytic <i>E. faecalis</i>	Gram-positive cocci Circular, convex, entire, smooth and cream (Figure 1) Non-motile α-hemolytic <i>E. faecalis</i> (99.9%)
Genotypic Analysis Sequencing of 16S ribosomal RNA gene (~ 1350 base pairs)	≥ 99% sequence identity to <i>E. faecalis</i> EnGen0237, strain SF24397 (GenBank: AJAW01000030.1)	99.9% sequence identity to <i>E. faecalis</i> EnGen0237, strain SF24397 (GenBank: AJAW01000030.1)
Purity (post-freeze) 7 days at 37°C in an aerobic atmosphere with or without 5% CO ₂ on Tryptic Soy agar with 5% defibrinated sheep blood	Growth consistent with expected colony morphology	Growth consistent with expected colony morphology
Viability (post-freeze)	Growth	Growth

Figure 1: Colony Morphology



/Sonia Bjorum Brower/
Sonia Bjorum Brower

09 MAR 2023

Technical Manager or designee, ATCC Federal Solutions

ATCC®, on behalf of BEI Resources, hereby represents and warrants that the material provided under this certificate has been subjected to the tests and procedures specified and that the results described, along with any other data provided in this certificate, are true and accurate to the best of ATCC®'s knowledge.

ATCC® is a trademark of the American Type Culture Collection.
You are authorized to use this product for research use only. It is not intended for human use.

