

**Genomic DNA from *Anopheles gambiae*, Strain G3**

**Catalog No. MRA-142**

This reagent is the tangible property of the U.S. Government.

**Product Description:**

Genomic DNA was extracted from a preparation of *Anopheles gambiae* (*A. gambiae*), strain G3.

**Lot: 70051596<sup>1,2</sup>**

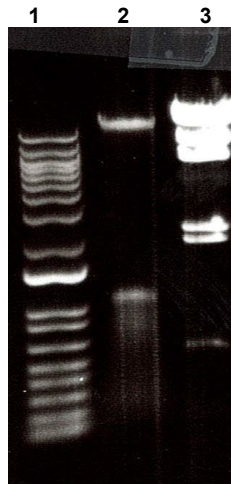
**Manufacturing Date: 29MAR2022**

TEST	SPECIFICATIONS	RESULTS
Agarose Gel Electrophoresis	High molecular weight chromosomal DNA	High molecular weight chromosomal DNA (Figure 1)
Concentration by NanoDrop Measurement	Report results	1 µg in 100 µL per vial (10 µg/mL)
Amount per vial	Report results	1 µg per vial

<sup>1</sup>MRA-142 lot 70051596 was extracted using a Gentra® PureGene® Tissue Kit and vialied in hydration solution (10 mM Tris-HCl and 1 mM EDTA, pH 7.5).

<sup>2</sup>The most recent authentication was performed on the 354<sup>th</sup> generation of *Anopheles gambiae*, strain G3.

**Figure 1: Agarose Gel Electrophoresis**



Lane 1: 1 Kb ladder  
 Lane 2: 0.5 µg of MRA-142  
 Lane 3: Lambda *Hind*III digest

/Sonia Bjorum Brower/  
 Sonia Bjorum Brower

Technical Manager or designee, ATCC Federal Solutions

20 MAR 2023

ATCC®, on behalf of BEI Resources, hereby represents and warrants that the material provided under this certificate has been subjected to the tests and procedures specified and that the results described, along with any other data provided in this certificate, are true and accurate to the best of ATCC®'s knowledge.

ATCC® is a trademark of the American Type Culture Collection.  
 You are authorized to use this product for research use only. It is not intended for human use.



BEI Resources  
[www.beiresources.org](http://www.beiresources.org)

E-mail: [contact@beiresources.org](mailto:contact@beiresources.org)  
 Tel: 800-359-7370  
 Fax: 703-365-2898