

**Polyclonal Anti-*Mycobacterium tuberculosis* H37Rv Lipoarabinomannan (LAM) (IgG, Rabbit)**

**Catalog No. NR-55636**

This reagent is the tangible property of the U.S. Government.

**Product Description:**

Polyclonal antibody to *Mycobacterium tuberculosis*, strain H37Rv Lipoarabinomannan (LAM) (BEI Resources NR-14848) was produced in New Zealand white rabbits and purified by protein G affinity chromatography.

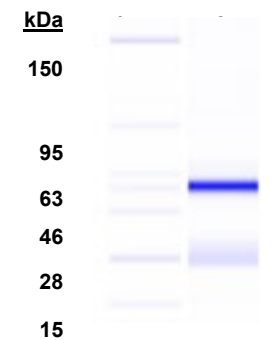
**Lot: 70046287**

**Manufacturing Date: 22NOV2021**

| TEST  | SPECIFICATIONS  | RESULTS   |
|---|---|---|
| Agilent® Protein 230 Analysis                           | Correct molecular weight (MW) for heavy and light chains; Report purity | Correct molecular weight (MW) for heavy and light chains (Figure 1); 98.2% pure |
| Concentration by Spectrophotometer at OD <sub>280</sub> | ~ 1 mg per mL   | 3.7 mg per mL   |
| Functional Activity by Indirect ELISA <sup>1</sup>      | Reactive  | Reactive (Figure 2)   |
| Sterility   | 0.22 µm filter-sterilized   | 0.22 µm filter-sterilized   |

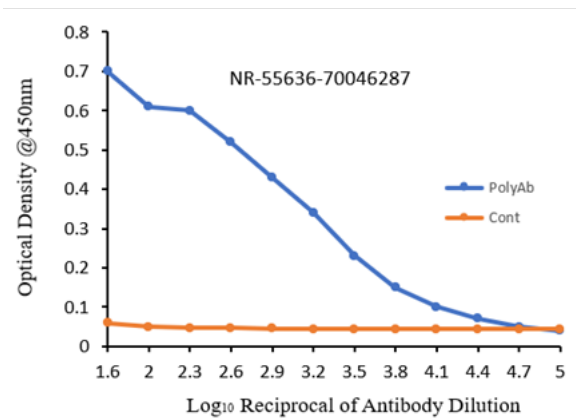
<sup>1</sup>Plates were coated with 20 µg/mL of *M. tuberculosis* LAM antigen in PBS. Secondary antibody was goat anti-rabbit IgG HRP conjugate (Bethyl Laboratories Cat # A120-101P).

**Figure 1: Agilent® Protein 230 Analysis**



Lane 1: MW Markers (kDa)  
Lane 2: NR-55636

**Figure 2: Indirect ELISA**



/Sonia Bjorum Brower/

Sonia Bjorum Brower

19 APR 2023

Technical Manager or designee, ATCC Federal Solutions

ATCC®, on behalf of BEI Resources, hereby represents and warrants that the material provided under this certificate has been subjected to the tests and procedures specified and that the results described, along with any other data provided in this certificate, are true and accurate to the best of ATCC®'s knowledge.

ATCC® is a trademark of the American Type Culture Collection.

You are authorized to use this product for research use only. It is not intended for human use.

