

***Streptococcus mitis*, Strain F0392**

Catalog No. HM-262

Product Description:

Streptococcus mitis (*S. mitis*), strain F0392 was isolated from a human oral cavity. HM-262 was produced by inoculation of BEI Resources seed lot 59476579 into Tryptic Soy broth and incubated for 1 day at 37°C in an aerobic atmosphere. Broth inoculum was added to Tryptic Soy agar with 5% defibrinated sheep blood kolles, which were grown for 1 day at 37°C in an aerobic atmosphere to produce this lot. Quality control testing was completed under propagation conditions unless otherwise noted.

Note: Quality control of HMP material is only performed to demonstrate that the material distributed by BEI Resources is identical to the deposited material. It should not be considered a complete characterization of the deposited organism.

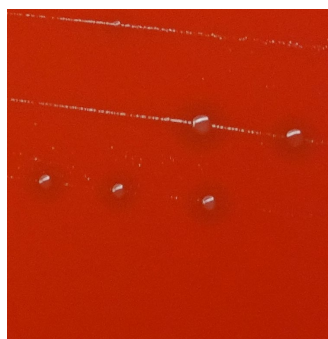
Lot: 70057437

Manufacturing Date: 11JAN2023

TEST	SPECIFICATIONS	RESULTS
Phenotypic Analysis Cellular morphology Colony morphology Hemolysis Motility (wet mount)	Gram-positive cocci Report results Report results Report results	Gram-positive cocci Circular, convex, entire, smooth and gray (Figure 1) α-hemolytic Non-motile
Genotypic Analysis Sequencing of 16S ribosomal RNA gene (~ 1490 base pairs)	≥ 99% sequence identity to <i>S. mitis</i> , strain F0392 (GenBank: AFUO01000001.1)	100% sequence identity to <i>S. mitis</i> , strain F0392 (GenBank: AFUO01000001.1) ¹
Purity (post-freeze) 7 days at 37°C in an aerobic atmosphere with and without 5% CO ₂ on Tryptic Soy agar with 5% defibrinated sheep blood	Growth consistent with expected colony morphology	Growth consistent with expected colony morphology
Viability (post-freeze)	Growth	Growth

¹Consistent with other *Streptococcus* species

Figure 1: Colony Morphology



/Sonia Bjorum Brower/

Sonia Bjorum Brower

Technical Manager or designee, ATCC Federal Solutions

17 APR 2023

ATCC®, on behalf of BEI Resources, hereby represents and warrants that the material provided under this certificate has been subjected to the tests and procedures specified and that the results described, along with any other data provided in this certificate, are true and accurate to the best of ATCC®'s knowledge.

ATCC® is a trademark of the American Type Culture Collection.

You are authorized to use this product for research use only. It is not intended for human use.

